

Product datasheet for **TA339304**

IFI44L Rabbit Polyclonal Antibody

Product data:

Product Type:	Primary Antibodies
Applications:	IHC, WB
Recommended Dilution:	WB, IHC
Reactivity:	Human
Host:	Rabbit
Isotype:	IgG
Clonality:	Polyclonal
Immunogen:	The immunogen for anti-IFI44L antibody: synthetic peptide directed towards the N terminal of human IFI44L. Synthetic peptide located within the following region: MEVTTRLTWNDENHLRKLKLLGNVLSLLYKSSVHGGSIEDMVERCSRQGCT
Formulation:	Liquid. Purified antibody supplied in 1x PBS buffer with 0.09% (w/v) sodium azide and 2% sucrose.
Concentration:	lot specific
Purification:	Protein A purified
Conjugation:	Unconjugated
Storage:	Store at -20°C as received.
Stability:	Stable for 12 months from date of receipt.
Predicted Protein Size:	47 kDa
Gene Name:	interferon induced protein 44 like
Database Link:	NP_006811 Entrez Gene 10964 Human Q53G44
Background:	The function remains known.
Synonyms:	C1orf29; GS3686
Note:	Immunogen Sequence Homology: Human: 100%

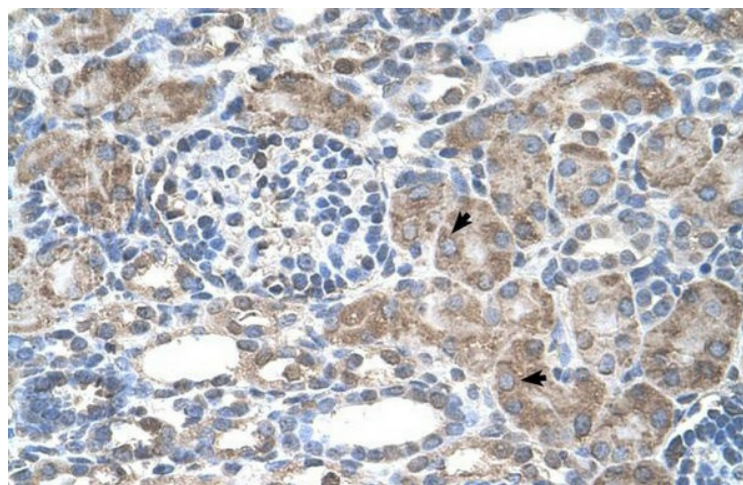


[View online »](#)

Product images:



WB Suggested Anti-IFI44L Antibody Titration: 5.0 ug/ml; Positive Control: Jurkat cell lysate



Human kidney