

## Product datasheet for **TA339293**

### **MTHFD1 Rabbit Polyclonal Antibody**

#### **Product data:**

|                         |   |
|-------------------------|---|
| Product Type:           | Primary Antibodies  |
| Applications:           | IHC, WB   |
| Recommended Dilution:   | WB, IHC   |
| Reactivity:             | Human   |
| Host:                   | Rabbit  |
| Isotype:                | IgG   |
| Clonality:              | Polyclonal  |
| Immunogen:              | The immunogen for anti-MTHFD1 antibody: synthetic peptide directed towards the N terminal of human MTHFD1. Synthetic peptide located within the following region:<br>RTTTESEVMKYITSLNEDSTVHGFLVQLPLDSENSINTEEVINAIAPK |
| Formulation:            | Liquid. Purified antibody supplied in 1x PBS buffer with 0.09% (w/v) sodium azide and 2% sucrose.<br><i>Note that this product is shipped as lyophilized powder to China customers.</i>                               |
| Concentration:          | lot specific  |
| Purification:           | Protein A purified  |
| Conjugation:            | Unconjugated  |
| Storage:                | Store at -20°C as received.   |
| Stability:              | Stable for 12 months from date of receipt.  |
| Predicted Protein Size: | 101 kDa   |
| Gene Name:              | methylenetetrahydrofolate dehydrogenase, cyclohydrolase and formyltetrahydrofolate synthetase 1   |
| Database Link:          | <a href="#">NP_005947</a><br><a href="#">Entrez Gene 4522 Human</a><br><a href="#">P11586</a>   |



[View online »](#)

**Background:**

This gene encodes a protein that possesses three distinct enzymatic activities, 5,10-methylenetetrahydrofolate dehydrogenase, 5,10-methenyltetrahydrofolate cyclohydrolase and 10-formyltetrahydrofolate synthetase. Each of these activities catalyzes one of three sequential reactions in the interconversion of 1-carbon derivatives of tetrahydrofolate, which are substrates for methionine, thymidylate, and de novo purine syntheses. The trifunctional enzymatic activities are conferred by two major domains, an aminoterminal portion containing the dehydrogenase and cyclohydrolase activities and a larger synthetase domain. [provided by RefSeq, Jul 2008]

**Synonyms:**

MTHFC; MTHFD

**Note:**

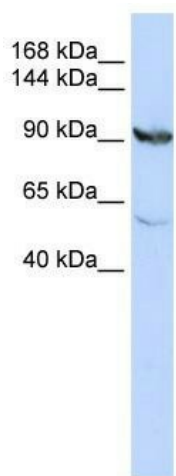
Immunogen Sequence Homology: Rat: 100%; Human: 100%; Mouse: 100%; Dog: 92%; Pig: 92%; Horse: 92%; Bovine: 92%; Guinea pig: 92%; Rabbit: 85%; Zebrafish: 85%

**Protein Families:**

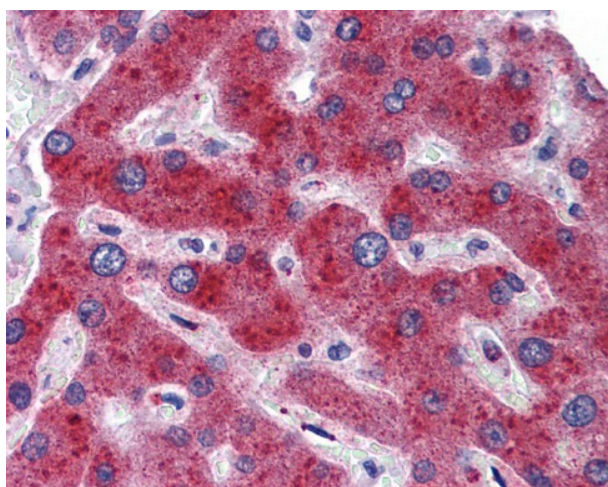
Druggable Genome, Stem cell - Pluripotency

**Protein Pathways:**

Glyoxylate and dicarboxylate metabolism, Metabolic pathways, One carbon pool by folate

**Product images:**


WB Suggested Anti-MTHFD1 Antibody Titration:  
0.2-1 ug/ml; ELISA Titer: 1: 12500; Positive  
Control: HepG2 cell lysate. MTHFD1 is supported  
by BioGPS gene expression data to be expressed  
in HepG2



Liver