

Product datasheet for **TA339292**

MAT2A Rabbit Polyclonal Antibody

Product data:

Product Type:	Primary Antibodies
Applications:	WB
Recommended Dilution:	WB
Reactivity:	Human
Host:	Rabbit
Isotype:	IgG
Clonality:	Polyclonal
Immunogen:	The immunogen for anti-MAT2A antibody: synthetic peptide directed towards the middle region of human MAT2A. Synthetic peptide located within the following region: LLEIVKKNFDLRPGVIVRDLDLKKPIYQRTAAYGHFGRDSFPWEVPKCLK
Formulation:	Liquid. Purified antibody supplied in 1x PBS buffer with 0.09% (w/v) sodium azide and 2% sucrose. <i>Note that this product is shipped as lyophilized powder to China customers.</i>
Concentration:	lot specific
Purification:	Protein A purified
Conjugation:	Unconjugated
Storage:	Store at -20°C as received.
Stability:	Stable for 12 months from date of receipt.
Predicted Protein Size:	44 kDa
Gene Name:	methionine adenosyltransferase 2A
Database Link:	NP_005902 Entrez Gene 4144 Human P31153
Background:	The protein encoded by this gene catalyzes the production of S-adenosylmethionine (AdoMet) from methionine and ATP. AdoMet is the key methyl donor in cellular processes. [provided by RefSeq, Jun 2011]
Synonyms:	MATA2; MATII; SAMS2

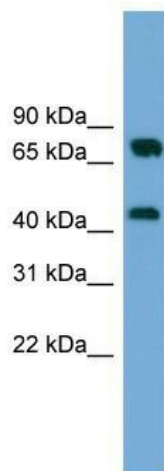


[View online »](#)

Note: Immunogen Sequence Homology: Dog: 100%; Pig: 100%; Rat: 100%; Horse: 100%; Human: 100%; Mouse: 100%; Bovine: 100%; Guinea pig: 100%; Zebrafish: 93%

Protein Pathways: Cysteine and methionine metabolism, Metabolic pathways, Selenoamino acid metabolism

Product images:



WB Suggested Anti-MAT2A Antibody Titration: 0.2-1 ug/ml; ELISA Titer: 1: 312500; Positive Control: HeLa cell lysate. MAT2A is strongly supported by BioGPS gene expression data to be expressed in Human HeLa cells