

Product datasheet for **TA339287**

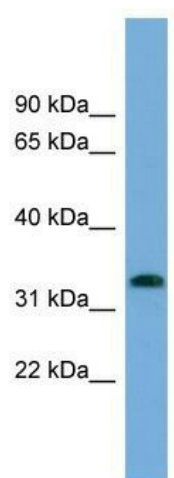
IFI35 Rabbit Polyclonal Antibody

Product data:

| | |
|-------------------------|---|
| Product Type: | Primary Antibodies |
| Applications: | WB |
| Recommended Dilution: | WB |
| Reactivity: | Human |
| Host: | Rabbit |
| Isotype: | IgG |
| Clonality: | Polyclonal |
| Immunogen: | The immunogen for anti-IFI35 antibody: synthetic peptide directed towards the N terminal of human IFI35. Synthetic peptide located within the following region: MSAPLDAALHALQEEQARLKMRLWDLQQLRKELGDSPKDKVPFVSPKIPL |
| Formulation: | Liquid. Purified antibody supplied in 1x PBS buffer with 0.09% (w/v) sodium azide and 2% sucrose. <i>Note that this product is shipped as lyophilized powder to China customers.</i> |
| Concentration: | lot specific |
| Purification: | Protein A purified |
| Conjugation: | Unconjugated |
| Storage: | Store at -20°C as received. |
| Stability: | Stable for 12 months from date of receipt. |
| Predicted Protein Size: | 32 kDa |
| Gene Name: | interferon induced protein 35 |
| Database Link: | NP_005524 Entrez Gene 3430 Human P80217 |
| Background: | Not yet known. |
| Synonyms: | IFP35 |
| Note: | Immunogen Sequence Homology: Human: 100% |



[View online »](#)

Product images:

WB Suggested Anti-IFI35 antibody titration:0.2-1ug/mL; Positive control: HT1080 cell lysate.