

Product datasheet for **TA339286**

Bcat1 Rabbit Polyclonal Antibody

Product data:

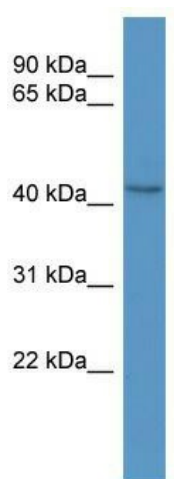
Product Type:	Primary Antibodies
Applications:	WB
Recommended Dilution:	WB
Reactivity:	Mouse
Host:	Rabbit
Isotype:	IgG
Clonality:	Polyclonal
Immunogen:	The immunogen for anti-Bcat1 antibody: synthetic peptide corresponding to a region of Mouse. Synthetic peptide located within the following region: ACVVCPSDILYKQGMLHIPTMENGPKLASRILGKLTDIQYGRVESDWTI
Formulation:	Liquid. Purified antibody supplied in 1x PBS buffer with 0.09% (w/v) sodium azide and 2% sucrose. <i>Note that this product is shipped as lyophilized powder to China customers.</i>
Concentration:	lot specific
Purification:	Protein A purified
Conjugation:	Unconjugated
Storage:	Store at -20°C as received.
Stability:	Stable for 12 months from date of receipt.
Predicted Protein Size:	50 kDa
Gene Name:	branched chain aminotransferase 1, cytosolic
Database Link:	NP_001019639 Entrez Gene 12035 Mouse P24288
Background:	Catalyzes the first reaction in the catabolism of the essential branched chain amino acids leucine, isoleucine, and valine.
Synonyms:	BCAT(c); BCT1; DKFZp686E12175; ECA39; MECA39; PNAS-121; PP18



[View online »](#)

Note: Immunogen Sequence Homology: Human: 100%; Dog: 93%; Pig: 93%; Horse: 93%; Sheep: 93%; Bovine: 93%; Rabbit: 93%; Mouse: 86%; Rat: 82%; Guinea pig: 79%

Product images:



WB Suggested Anti-Bcat1 Antibody Titration: 0.2-1 ug/ml; ELISA Titer: 1: 62500; Positive Control: Mouse Heart