

## Product datasheet for **TA339285**

### BCAT1 Rabbit Polyclonal Antibody

#### Product data:

Product Type:	Primary Antibodies
Applications:	WB
Recommended Dilution:	WB
Reactivity:	Human
Host:	Rabbit
Isotype:	IgG
Clonality:	Polyclonal
Immunogen:	The immunogen for anti-BCAT1 antibody: synthetic peptide directed towards the N terminal of human BCAT1. Synthetic peptide located within the following region: MKDCSNGCSAECTGEGGSKEVVGTFKAKDLIVTPATILKEKDPNNLVFG
Formulation:	Liquid. Purified antibody supplied in 1x PBS buffer with 0.09% (w/v) sodium azide and 2% sucrose. <i>Note that this product is shipped as lyophilized powder to China customers.</i>
Concentration:	lot specific
Purification:	Protein A purified
Conjugation:	Unconjugated
Storage:	Store at -20°C as received.
Stability:	Stable for 12 months from date of receipt.
Predicted Protein Size:	43 kDa
Gene Name:	branched chain amino acid transaminase 1
Database Link:	<a href="#">NP_005495</a> <a href="#">Entrez Gene 586 Human</a> <a href="#">P54687</a>



[View online »](#)

**Background:** This gene encodes the cytosolic form of the enzyme branched-chain amino acid transaminase. This enzyme catalyzes the reversible transamination of branched-chain alpha-keto acids to branched-chain L-amino acids essential for cell growth. Two different clinical disorders have been attributed to a defect of branched-chain amino acid transamination: hypervalinemia and hyperleucine-isoleucinemia. As there is also a gene encoding a mitochondrial form of this enzyme, mutations in either gene may contribute to these disorders. Alternatively spliced transcript variants have been described. [provided by RefSeq, May 2010]

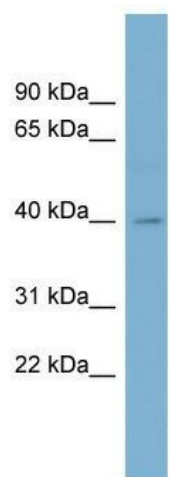
**Synonyms:** BCATC; BCT1; ECA39; MECA39; PNAS121; PP18

**Note:** Immunogen Sequence Homology: Dog: 100%; Human: 100%; Rabbit: 100%; Horse: 92%; Sheep: 92%; Pig: 85%; Mouse: 85%

**Protein Families:** Druggable Genome

**Protein Pathways:** Metabolic pathways, Pantothenate and CoA biosynthesis, Valine, leucine and isoleucine biosynthesis, Valine, leucine and isoleucine degradation

### Product images:



WB Suggested Anti-BCAT1 Antibody Titration: 0.2-1 ug/ml; ELISA Titer: 1: 1562500; Positive Control: Human Small Intestine