

Product datasheet for **TA339284**

SMC4 Rabbit Polyclonal Antibody

Product data:

Product Type:	Primary Antibodies
Applications:	WB
Recommended Dilution:	WB
Reactivity:	Human
Host:	Rabbit
Isotype:	IgG
Clonality:	Polyclonal
Immunogen:	The immunogen for anti-SMC4 antibody: synthetic peptide directed towards the middle region of human SMC4. Synthetic peptide located within the following region: EARCHEMKPNLGAIAEYKKKEELYLQRVAELDKITYERDSFRQAYEDLRK
Formulation:	Liquid. Purified antibody supplied in 1x PBS buffer with 0.09% (w/v) sodium azide and 2% sucrose. <i>Note that this product is shipped as lyophilized powder to China customers.</i>
Concentration:	lot specific
Purification:	Protein A purified
Conjugation:	Unconjugated
Storage:	Store at -20°C as received.
Stability:	Stable for 12 months from date of receipt.
Predicted Protein Size:	147 kDa
Gene Name:	structural maintenance of chromosomes 4
Database Link:	NP_001002800 Entrez Gene 10051 Human Q9NTJ3



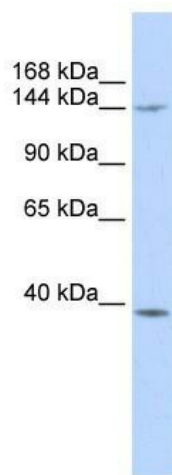
[View online »](#)

Background: Members of the structural maintenance of chromosomes, or SMC, family (e.g., SMC1A; MIM 300040) are critical for mitotic chromosome condensation in frogs and for DNA repair in mammals. [supplied by OMIM, Nov 2010]. Transcript Variant: This variant (2) is the longest transcript and encodes the longer isoform (1). Publication Note: This RefSeq record includes a subset of the publications that are available for this gene. Please see the Gene record to access additional publications. ##Evidence-Data-START## Transcript exon combination :: AB019987.1, AK315070.1 [ECO:0000332] RNAseq introns :: single sample supports all introns ERS025081, ERS025083 [ECO:0000348] ##Evidence-Data-END## COMPLETENESS: complete on the 3' end.

Synonyms: CAP-C; CAPC; hCAP-C; SMC-4; SMC4L1

Note: Immunogen Sequence Homology: Dog: 100%; Pig: 100%; Rat: 100%; Horse: 100%; Human: 100%; Guinea pig: 100%; Mouse: 93%; Bovine: 93%; Zebrafish: 93%

Product images:



WB Suggested Anti-SMC4 Antibody Titration: 0.2-1 ug/ml; ELISA Titer: 1: 312500; Positive Control: MCF7 cell lysate. There is BioGPS gene expression data showing that SMC4 is expressed in MCF7