

## Product datasheet for **TA339278**

### MAGEA6 Rabbit Polyclonal Antibody

#### Product data:

Product Type:	Primary Antibodies
Applications:	WB
Recommended Dilution:	WB
Reactivity:	Human
Host:	Rabbit
Isotype:	IgG
Clonality:	Polyclonal
Immunogen:	The immunogen for anti-MAGEA6 antibody: synthetic peptide directed towards the middle region of human MAGEA6. Synthetic peptide located within the following region: APEEKIWEELSVLEVFEGREDSIFGDPKLLTQYFVQENYLEYRQVPGSD
Formulation:	Liquid. Purified antibody supplied in 1x PBS buffer with 0.09% (w/v) sodium azide and 2% sucrose. <i>Note that this product is shipped as lyophilized powder to China customers.</i>
Concentration:	lot specific
Purification:	Protein A purified
Conjugation:	Unconjugated
Storage:	Store at -20°C as received.
Stability:	Stable for 12 months from date of receipt.
Predicted Protein Size:	35 kDa
Gene Name:	MAGE family member A6
Database Link:	<a href="#">NP_005354</a> <a href="#">Entrez Gene 4105 Human P43360</a>



[View online »](#)

**Background:**

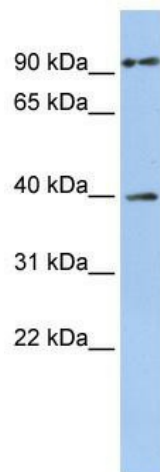
This gene is a member of the MAGEA gene family. The members of this family encode proteins with 50 to 80% sequence identity to each other. The promoters and first exons of the MAGEA genes show considerable variability, suggesting that the existence of this gene family enables the same function to be expressed under different transcriptional controls. The MAGEA genes are clustered at chromosomal location Xq28. They have been implicated in some hereditary disorders, such as dyskeratosis congenita. Alternative splicing results in multiple transcript variants. [provided by RefSeq, Aug 2013]

**Synonyms:**

CT1.6; MAGE-3b; MAGE3B; MAGE6

**Note:**

Immunogen Sequence Homology: Human: 100%; Dog: 83%; Pig: 83%; Rat: 83%; Horse: 83%; Mouse: 83%; Rabbit: 83%

**Product images:**

WB Suggested Anti-MAGEA6 Antibody Titration:  
0.2-1 ug/ml; ELISA Titer: 1: 312500; Positive  
Control: Jurkat cell lysate