

Product datasheet for **TA339274**

APOBEC3B Rabbit Polyclonal Antibody

Product data:

Product Type:	Primary Antibodies
Applications:	WB
Recommended Dilution:	WB
Reactivity:	Human
Host:	Rabbit
Isotype:	IgG
Clonality:	Polyclonal
Immunogen:	The immunogen for anti-APOBEC3B antibody: synthetic peptide directed towards the N terminal of human APOBEC3B. Synthetic peptide located within the following region: NQLPAYKCFQITWVSWTPCPCVAKLAEFLSEHPNVTLTISAARLYYW
Formulation:	Liquid. Purified antibody supplied in 1x PBS buffer with 0.09% (w/v) sodium azide and 2% sucrose. <i>Note that this product is shipped as lyophilized powder to China customers.</i>
Concentration:	lot specific
Purification:	Protein A purified
Conjugation:	Unconjugated
Storage:	Store at -20°C as received.
Stability:	Stable for 12 months from date of receipt.
Predicted Protein Size:	46 kDa
Gene Name:	apolipoprotein B mRNA editing enzyme catalytic subunit 3B
Database Link:	NP_004891 Entrez Gene 9582 Human Q9UH17



[View online »](#)

Background:

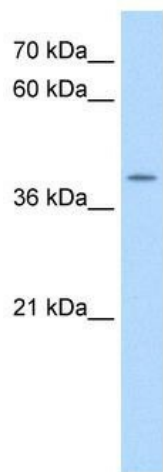
This gene is a member of the cytidine deaminase gene family. It is one of seven related genes or pseudogenes found in a cluster, thought to result from gene duplication, on chromosome 22. Members of the cluster encode proteins that are structurally and functionally related to the C to U RNA-editing cytidine deaminase APOBEC1. It is thought that the proteins may be RNA editing enzymes and have roles in growth or cell cycle control. A hybrid gene results from the deletion of approximately 29.5 kb of sequence between this gene, APOBEC3B, and the adjacent gene APOBEC3A. The breakpoints of the deletion are within the two genes, so the deletion allele is predicted to have the promoter and coding region of APOBEC3A, but the 3' UTR of APOBEC3B. Two transcript variants encoding different isoforms have been found for this gene. [provided by RefSeq, Jul 2012]

Synonyms:

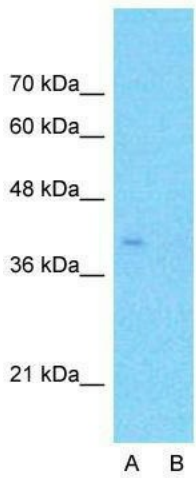
A3B; APOBEC1L; ARCD3; ARP4; bK150C2.2; DJ742C19.2; PHRBNL

Note:

Immunogen Sequence Homology: Human: 100%; Pig: 92%; Rat: 91%; Horse: 91%; Zebrafish: 90%; Bovine: 82%; Rabbit: 82%

Product images:

WB Suggested Anti-APOBEC3B Antibody Titration: 0.2-1 ug/ml; Positive Control: HepG2 cell lysate



Anti-APOBEC3B Western Blot & Peptide Block Validation

Lysate: HepG2 Cell

Lane A: Primary Antibody
Lane B: Primary Antibody + Blocking Peptide

Primary Antibody Concentration: 1.0µg/ml
Peptide Concentration: 5.0µg/ml
Lysate Quantity: 25µg/lane
Gel Concentration: 12%

Host: Rabbit; Target Name: APOBEC3B; Sample Tissue: HepG2; Lane A: Primary Antibody; Lane B: Primary Antibody + Blocking Peptide; Primary Antibody Concentration: 1 ug/ml; Peptide Concentration: 5 ug/ml; Lysate Quantity: 25 ug/lane/lane; Gel Concentration: