

Product datasheet for **TA339273**

NOLC1 Rabbit Polyclonal Antibody

Product data:

Product Type:	Primary Antibodies
Applications:	IHC, WB
Recommended Dilution:	WB, IHC
Reactivity:	Human, Zebrafish
Host:	Rabbit
Isotype:	IgG
Clonality:	Polyclonal
Immunogen:	The immunogen for anti-NOLC1 antibody: synthetic peptide directed towards the C terminal of human NOLC1. Synthetic peptide located within the following region: DNSFDAKRGGAAGDWGERANQVLKFTKGKSRHEKTKKKRGSYRGGSSISVQ
Formulation:	Liquid. Purified antibody supplied in 1x PBS buffer with 0.09% (w/v) sodium azide and 2% sucrose. <i>Note that this product is shipped as lyophilized powder to China customers.</i>
Concentration:	lot specific
Purification:	Protein A purified
Conjugation:	Unconjugated
Storage:	Store at -20°C as received.
Stability:	Stable for 12 months from date of receipt.
Predicted Protein Size:	73 kDa
Gene Name:	nucleolar and coiled-body phosphoprotein 1
Database Link:	NP_004732 Entrez Gene 9221 Human Q14978
Background:	Related to nucleogenesis, may play a role in the maintenance of the fundamental structure of the fibrillar center and dense fibrillar component in the nucleolus. It has intrinsic GTPase and ATPase activities. May play an important role in transcription catalyzed by RNA polymerase I.
Synonyms:	NOPP130; NOPP140; NS5ATP13; P130

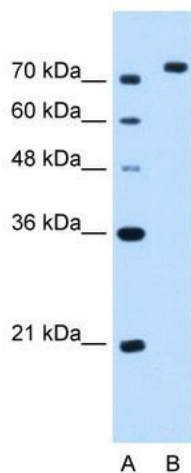


[View online »](#)

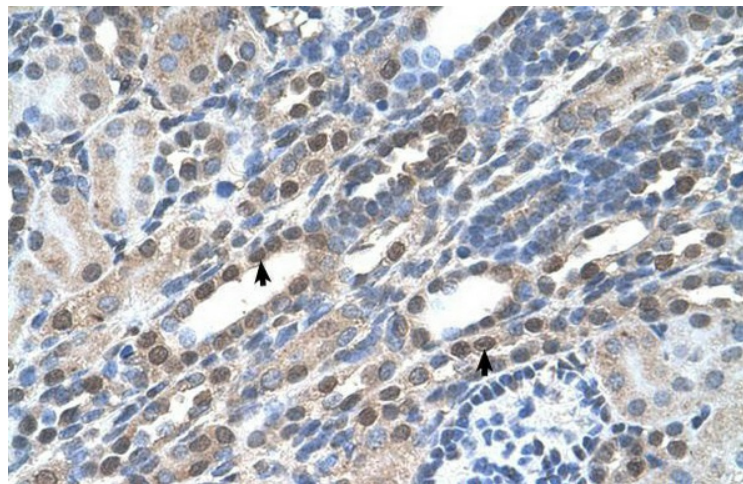
Note: Immunogen Sequence Homology: Dog: 100%; Pig: 100%; Rat: 100%; Goat: 100%; Horse: 100%; Human: 100%; Mouse: 100%; Bovine: 100%; Rabbit: 100%; Zebrafish: 100%; Guinea pig: 100%; Yeast: 92%

Protein Families: Stem cell - Pluripotency

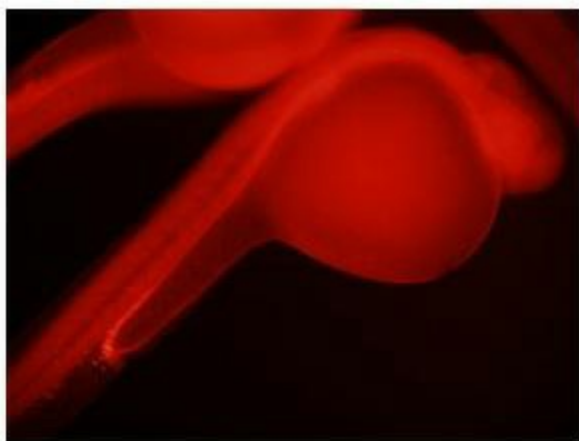
Product images:



NOLC1 antibody - C-terminal region validated by WB using HepG2 cell lysate at 2.5 ug/ml. NOLC1 is strongly supported by BioGPS gene expression data to be expressed in Human HepG2 cells



Human kidney



Immunohistochemistry with pFa fixed zebrafish kidney tissue at an antibody concentration of 0.004 using anti-NOLC1 antibody