

## Product datasheet for TA339271

### Glutamyl Prolyl tRNA synthetase (EPRS) Rabbit Polyclonal Antibody

#### Product data:

Product Type:	Primary Antibodies
Applications:	WB
Recommended Dilution:	WB
Reactivity:	Human
Host:	Rabbit
Isotype:	IgG
Clonality:	Polyclonal
Immunogen:	The immunogen for anti-EPRS antibody: synthetic peptide directed towards the middle region of human EPRS. Synthetic peptide located within the following region: KSEKQNKPQKQNDGQRKDPSKNQGGGLSSSGAGEGQGPKKQTRLGLEAKK
Formulation:	Liquid. Purified antibody supplied in 1x PBS buffer with 0.09% (w/v) sodium azide and 2% sucrose. <i>Note that this product is shipped as lyophilized powder to China customers.</i>
Concentration:	lot specific
Purification:	Protein A purified
Conjugation:	Unconjugated
Storage:	Store at -20°C as received.
Stability:	Stable for 12 months from date of receipt.
Predicted Protein Size:	170 kDa
Gene Name:	glutamyl-prolyl-tRNA synthetase
Database Link:	<a href="#">NP_004437</a> <a href="#">Entrez Gene 2058 Human P07814</a>
Background:	Aminoacyl-tRNA synthetases are a class of enzymes that charge tRNAs with their cognate amino acids. The protein encoded by this gene is a multifunctional aminoacyl-tRNA synthetase that catalyzes the aminoacylation of glutamic acid and proline tRNA species. Alternative splicing has been observed for this gene, but the full-length nature and biological validity of the variant have not been determined. [provided by RefSeq, Jul 2008]



[View online »](#)

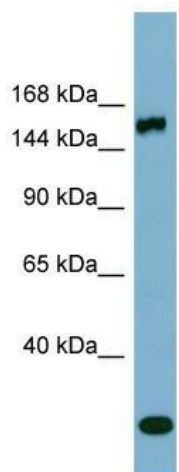
**Synonyms:** EARS; GLUPRORS; PARS; PIG32; QARS; QPRS

**Note:** Immunogen Sequence Homology: Human: 100%; Pig: 83%; Rat: 79%; Horse: 79%; Mouse: 79%; Rabbit: 79%

**Protein Families:** Druggable Genome

**Protein Pathways:** Aminoacyl-tRNA biosynthesis, Metabolic pathways, Porphyrin and chlorophyll metabolism

### Product images:



WB Suggested Anti-EPRS Antibody Titration: 0.2-1 ug/ml; ELISA Titer: 1: 62500; Positive Control: PANC1 cell lysate. EPRS is strongly supported by BioGPS gene expression data to be expressed in Human PANC1 cells