

## Product datasheet for **TA339267**

### Rab9 (RAB9A) Rabbit Polyclonal Antibody

#### Product data:

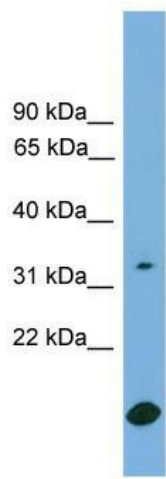
Product Type:	Primary Antibodies
Applications:	WB
Recommended Dilution:	WB
Reactivity:	Human, Monkey
Host:	Rabbit
Isotype:	IgG
Clonality:	Polyclonal
Immunogen:	The immunogen for anti-RAB9A antibody: synthetic peptide directed towards the middle region of human RAB9A. Synthetic peptide located within the following region: SLRTPFYRGSDCCLLTFSVDDSQSFQNLNWKKEFIYYADVKEPESFPFV
Formulation:	Liquid. Purified antibody supplied in 1x PBS buffer with 0.09% (w/v) sodium azide and 2% sucrose.
Concentration:	lot specific
Purification:	Protein A purified
Conjugation:	Unconjugated
Storage:	Store at -20°C as received.
Stability:	Stable for 12 months from date of receipt.
Predicted Protein Size:	23 kDa
Gene Name:	RAB9A, member RAS oncogene family
Database Link:	<a href="#">NP_004242</a> <a href="#">Entrez Gene 9367 Human P51151</a>
Background:	Involved in the transport of proteins between the endosomes and the trans Golgi network.
Synonyms:	RAB9
Note:	Immunogen Sequence Homology: Dog: 100%; Pig: 100%; Rat: 100%; Horse: 100%; Human: 100%; Mouse: 100%; Sheep: 100%; Bovine: 100%; Guinea pig: 100%; Zebrafish: 86%; Rabbit: 79%



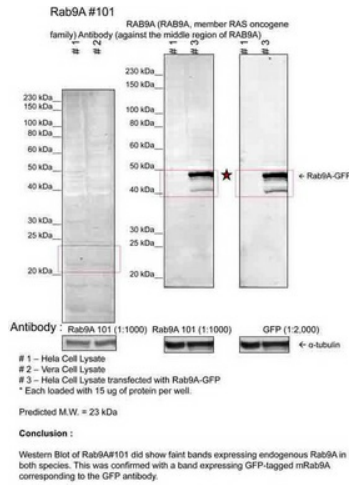
[View online »](#)

Protein Families: Druggable Genome

Product images:



WB Suggested Anti-RAB9A Antibody Titration: 0.2-1 ug/ml; ELISA Titer: 1: 312500; Positive Control: Jurkat cell lysate



RAB9A antibody - middle region validated by WB using 1. Human Cervical Cancer Cell Lysate (15ug); 2. Monkey Fibroblast Cell Lysate (15ug); 3. Human Cervical Cancer Cell transfected with mouse Rab8B-GFP (15ug) at 1: 1000.