

Product datasheet for **TA339265**

PSMB8 Rabbit Polyclonal Antibody

Product data:

Product Type:	Primary Antibodies
Applications:	WB
Recommended Dilution:	WB
Reactivity:	Human
Host:	Rabbit
Isotype:	IgG
Clonality:	Polyclonal
Immunogen:	The immunogen for Anti-PSMB8 antibody is: synthetic peptide directed towards the N-terminal region of Human PSMB8. Synthetic peptide located within the following region: MLIGTPTPRDTPSSWLTSLLVEAAPLDDTTLPVSSGCPGLEPTEFF
Formulation:	Liquid. Purified antibody supplied in 1x PBS buffer with 0.09% (w/v) sodium azide and 2% sucrose. <i>Note that this product is shipped as lyophilized powder to China customers.</i>
Concentration:	lot specific
Purification:	Protein A purified
Conjugation:	Unconjugated
Storage:	Store at -20°C as received.
Stability:	Stable for 12 months from date of receipt.
Predicted Protein Size:	29 kDa
Gene Name:	proteasome subunit beta 8
Database Link:	NP_004150 Entrez Gene 5696 Human P28062



[View online »](#)

Background:

The proteasome is a multicatalytic proteinase complex with a highly ordered ring-shaped 20S core structure. The core structure is composed of 4 rings of 28 non-identical subunits; 2 rings are composed of 7 alpha subunits and 2 rings are composed of 7 beta subunits. Proteasomes are distributed throughout eukaryotic cells at a high concentration and cleave peptides in an ATP/ubiquitin-dependent process in a non-lysosomal pathway. An essential function of a modified proteasome, the immunoproteasome, is the processing of class I MHC peptides. This gene encodes a member of the proteasome B-type family, also known as the T1B family, that is a 20S core beta subunit. This gene is located in the class II region of the MHC (major histocompatibility complex). Expression of this gene is induced by gamma interferon and this gene product replaces catalytic subunit 3 (proteasome beta 5 subunit) in the immunoproteasome. Proteolytic processing is required to generate a mature subunit. Two alternative transcripts encoding two isoforms have been identified; both isoforms are processed to yield the same mature subunit. [provided by RefSeq, Jul 2008]

Synonyms:

ALDD; D6S216; D6S216E; JMP; LMP7; NKJO; PSMB5i; RING10

Note:

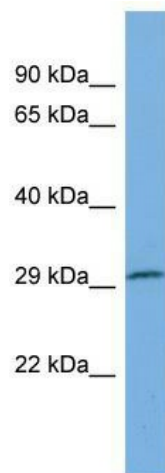
Immunogen Sequence Homology: Human: 100%

Protein Families:

Druggable Genome, Protease

Protein Pathways:

Proteasome

Product images:

Host: Rabbit; Target Name: PSMB8; Sample Tissue: HeLa Whole Cell lysates; Antibody Dilution: 1.0 ug/ml. PSMB8 is supported by BioGPS gene expression data to be expressed in HeLa