

## Product datasheet for **TA339256**

### RFC3 Rabbit Polyclonal Antibody

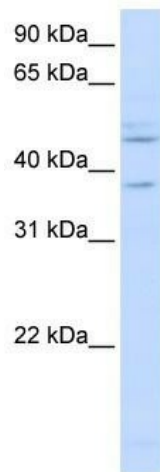
#### Product data:

Product Type:	Primary Antibodies
Applications:	WB
Recommended Dilution:	WB
Reactivity:	Human
Host:	Rabbit
Isotype:	IgG
Clonality:	Polyclonal
Immunogen:	The immunogen for anti-RFC3 antibody: synthetic peptide directed towards the C terminal of human RFC3. Synthetic peptide located within the following region: IIMKGLSELLHNCDGQLKGEVAQMAAYYEHRLQLGSKAIYHLEAFVAKF
Formulation:	Liquid. Purified antibody supplied in 1x PBS buffer with 0.09% (w/v) sodium azide and 2% sucrose. <i>Note that this product is shipped as lyophilized powder to China customers.</i>
Concentration:	lot specific
Purification:	Protein A purified
Conjugation:	Unconjugated
Storage:	Store at -20°C as received.
Stability:	Stable for 12 months from date of receipt.
Predicted Protein Size:	40 kDa
Gene Name:	replication factor C subunit 3
Database Link:	<a href="#">NP_002906</a> <a href="#">Entrez Gene 5983 Human P40938</a>



[View online »](#)

<b>Background:</b>	The elongation of primed DNA templates by DNA polymerase delta and DNA polymerase epsilon requires the accessory proteins proliferating cell nuclear antigen (PCNA) and replication factor C (RFC). RFC, also named activator 1, is a protein complex consisting of five distinct subunits of 140, 40, 38, 37, and 36 kDa. This gene encodes the 38 kDa subunit. This subunit is essential for the interaction between the 140 kDa subunit and the core complex that consists of the 36, 37, and 40 kDa subunits. Alternatively spliced transcript variants encoding distinct isoforms have been described. [provided by RefSeq, Jul 2008]
<b>Synonyms:</b>	RFC38
<b>Note:</b>	Immunogen Sequence Homology: Dog: 100%; Pig: 100%; Rat: 100%; Horse: 100%; Human: 100%; Mouse: 100%; Bovine: 100%; Rabbit: 100%; Zebrafish: 93%; Guinea pig: 93%
<b>Protein Families:</b>	Stem cell - Pluripotency
<b>Protein Pathways:</b>	DNA replication, Mismatch repair, Nucleotide excision repair

**Product images:**

WB Suggested Anti-RFC3 Antibody Titration: 0.2-1 ug/ml; ELISA Titer: 1: 62500; Positive Control: 721\_B cell lysate RFC3 is strongly supported by BioGPS gene expression data to be expressed in Human 721\_B cells