

## Product datasheet for **TA339255**

### **RANBP1 Rabbit Polyclonal Antibody**

#### **Product data:**

Product Type:	Primary Antibodies
Applications:	WB
Recommended Dilution:	WB
Reactivity:	Human
Host:	Rabbit
Isotype:	IgG
Clonality:	Polyclonal
Immunogen:	The immunogen for anti-RANBP1 antibody: synthetic peptide directed towards the C terminal of human RANBP1. Synthetic peptide located within the following region: KFEECRKEIEEREKKAGSGKNDHAEKVAEKLEALSVKEETKEDAEKQ
Formulation:	Liquid. Purified antibody supplied in 1x PBS buffer with 0.09% (w/v) sodium azide and 2% sucrose. <i>Note that this product is shipped as lyophilized powder to China customers.</i>
Concentration:	lot specific
Purification:	Protein A purified
Conjugation:	Unconjugated
Storage:	Store at -20°C as received.
Stability:	Stable for 12 months from date of receipt.
Predicted Protein Size:	23 kDa
Gene Name:	RAN binding protein 1
Database Link:	<a href="#">NP_002873</a> <a href="#">Entrez Gene 5902 Human P43487</a>
Background:	This gene encodes a protein that forms a complex with Ras-related nuclear protein (Ran) and metabolizes guanoside triphosphate (GTP). This complex participates in the regulation of the cell cycle by controlling transport of proteins and nucleic acids into the nucleus. There are multiple pseudogenes for this gene on chromosomes 9, 12, 17, and X. Alternative splicing results in multiple transcript variants. [provided by RefSeq, Jul 2013]

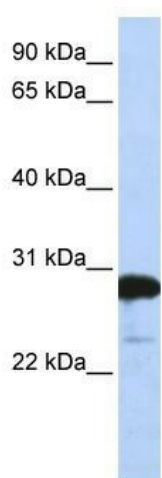


[View online »](#)

Synonyms: HTF9A

Note: Immunogen Sequence Homology: Human: 100%; Yeast: 90%; Horse: 79%; Bovine: 79%

### Product images:



WB Suggested Anti-RANBP1 Antibody Titration:  
0.2-1 ug/ml; ELISA Titer: 1: 12500; Positive  
Control: 721\_B cell lysate. RANBP1 is strongly  
supported by BioGPS gene expression data to be  
expressed in Human 721\_B cells