

Product datasheet for **TA339254**

MX1 Rabbit Polyclonal Antibody

Product data:

Product Type:	Primary Antibodies
Applications:	WB
Recommended Dilution:	WB
Reactivity:	Human
Host:	Rabbit
Isotype:	IgG
Clonality:	Polyclonal
Immunogen:	The immunogen for anti-MX1 antibody: synthetic peptide directed towards the C terminal of human MX1. Synthetic peptide located within the following region: KAMLQLLQDKDTYSWLLKERSDTSKRRKFLKERLARLTQARRRLAQFPG
Formulation:	Liquid. Purified antibody supplied in 1x PBS buffer with 0.09% (w/v) sodium azide and 2% sucrose. <i>Note that this product is shipped as lyophilized powder to China customers.</i>
Concentration:	lot specific
Purification:	Protein A purified
Conjugation:	Unconjugated
Storage:	Store at -20°C as received.
Stability:	Stable for 12 months from date of receipt.
Predicted Protein Size:	75 kDa
Gene Name:	MX dynamin like GTPase 1
Database Link:	NP_002453 Entrez Gene 4599 Human P20591



[View online »](#)

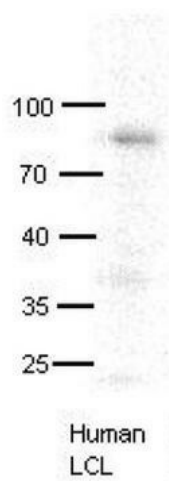
Background: This gene encodes a guanosine triphosphate (GTP)-metabolizing protein that participates in the cellular antiviral response. The encoded protein is induced by type I and type II interferons and antagonizes the replication process of several different RNA and DNA viruses. There is a related gene located adjacent to this gene on chromosome 21, and there are multiple pseudogenes located in a cluster on chromosome 4. Alternative splicing results in multiple transcript variants. [provided by RefSeq, Sep 2013]

Synonyms: IFI-78K; IFI78; MX; MxA

Note: Immunogen Sequence Homology: Dog: 100%; Pig: 100%; Human: 100%; Rat: 93%; Guinea pig: 93%; Horse: 86%; Mouse: 86%; Sheep: 86%; Bovine: 86%; Rabbit: 86%

Protein Families: Druggable Genome

Product images:



MX1 antibody - C-terminal region validated by WB using human LCL at 1:1000