

Product datasheet for **TA339253**

MMP7 Rabbit Polyclonal Antibody

Product data:

| | |
|-------------------------|--|
| Product Type: | Primary Antibodies |
| Applications: | WB |
| Recommended Dilution: | WB |
| Reactivity: | Human |
| Host: | Rabbit |
| Isotype: | IgG |
| Clonality: | Polyclonal |
| Immunogen: | The immunogen for anti-MMP7 antibody: synthetic peptide directed towards the C terminal of human MMP7. Synthetic peptide located within the following region: AATHELGHSLGMGHSSDPNAVVMYPTYGNGDPQNFKLSQDDIKGIQKLYGK |
| Formulation: | Liquid. Purified antibody supplied in 1x PBS buffer with 0.09% (w/v) sodium azide and 2% sucrose. <i>Note that this product is shipped as lyophilized powder to China customers.</i> |
| Concentration: | lot specific |
| Purification: | Protein A purified |
| Conjugation: | Unconjugated |
| Storage: | Store at -20°C as received. |
| Stability: | Stable for 12 months from date of receipt. |
| Predicted Protein Size: | 19 kDa |
| Gene Name: | matrix metalloproteinase 7 |
| Database Link: | NP_002414 Entrez Gene 4316 Human P09237 |



[View online »](#)

Background:

Proteins of the matrix metalloproteinase (MMP) family are involved in the breakdown of extracellular matrix in normal physiological processes, such as embryonic development, reproduction, and tissue remodeling, as well as in disease processes, such as arthritis and metastasis. Most MMP's are secreted as inactive proproteins which are activated when cleaved by extracellular proteinases. The enzyme encoded by this gene degrades proteoglycans, fibronectin, elastin and casein and differs from most MMP family members in that it lacks a conserved C-terminal protein domain. The enzyme is involved in wound healing, and studies in mice suggest that it regulates the activity of defensins in intestinal mucosa. The gene is part of a cluster of MMP genes which localize to chromosome 11q22.3. [provided by RefSeq, Jul 2008]

Synonyms:

MMP-7; MPSL1; PUMP-1

Note:

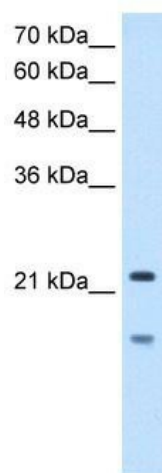
Immunogen Sequence Homology: Human: 100%; Sheep: 100%; Bovine: 83%; Rabbit: 83%; Horse: 79%; Pig: 75%; Guinea pig: 75%

Protein Families:

Druggable Genome, Protease

Protein Pathways:

Wnt signaling pathway

Product images:

WB Suggested Anti-MMP7 Antibody Titration: 2.5 ug/ml; Positive Control: HepG2 cell lysate