

Product datasheet for **TA339245**

TBL1Y Rabbit Polyclonal Antibody

Product data:

Product Type:	Primary Antibodies
Applications:	WB
Recommended Dilution:	WB
Reactivity:	Human
Host:	Rabbit
Isotype:	IgG
Clonality:	Polyclonal
Immunogen:	The immunogen for anti-TBL1Y antibody: synthetic peptide directed towards the middle region of human TBL1Y. Synthetic peptide located within the following region: LASGSFDKYVHIWNTQSGSLVHSYQGTGGIFVCWNARGDKVGASASDGS
Formulation:	Liquid. Purified antibody supplied in 1x PBS buffer with 0.09% (w/v) sodium azide and 2% sucrose. <i>Note that this product is shipped as lyophilized powder to China customers.</i>
Concentration:	lot specific
Purification:	Protein A purified
Conjugation:	Unconjugated
Storage:	Store at -20°C as received.
Stability:	Stable for 12 months from date of receipt.
Predicted Protein Size:	57 kDa
Gene Name:	transducin (beta)-like 1, Y-linked
Database Link:	NP_150600 Entrez Gene 90665 Human Q9BQ87



[View online »](#)

Background:

The protein encoded by this gene has sequence similarity with members of the WD40 repeat-containing protein family. The WD40 group is a large family of proteins, which appear to have a regulatory function. It is believed that the WD40 repeats mediate protein-protein interactions and members of the family are involved in signal transduction, RNA processing, gene regulation, vesicular trafficking, cytoskeletal assembly and may play a role in the control of cytotypic differentiation. This gene is highly similar to TBL1X gene in nucleotide sequence and protein sequence, but the TBL1X gene is located on chromosome X and this gene is on chromosome Y. This gene has three alternatively spliced transcript variants encoding the same protein.

Synonyms:

TBL1

Note:

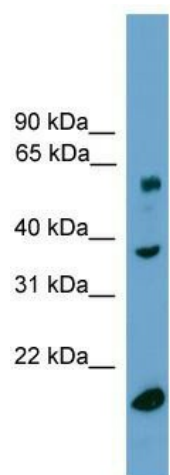
Immunogen Sequence Homology: Human: 100%; Dog: 93%; Pig: 93%; Rat: 93%; Horse: 93%; Mouse: 93%; Bovine: 93%; Guinea pig: 93%; Rabbit: 79%; Zebrafish: 79%

Protein Families:

Transcription Factors

Protein Pathways:

Wnt signaling pathway

Product images:

WB Suggested Anti-TBL1Y Antibody Titration: 0.2-1 ug/ml; Positive Control: Human Lung