

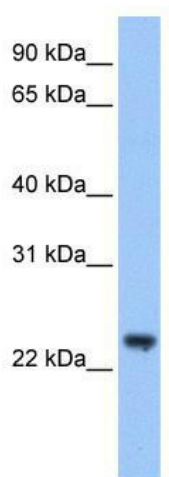
## Product datasheet for TA339244

### TRIM48 Rabbit Polyclonal Antibody

#### Product data:

Product Type:	Primary Antibodies
Applications:	WB
Recommended Dilution:	WB
Reactivity:	Human
Host:	Rabbit
Isotype:	IgG
Clonality:	Polyclonal
Immunogen:	The immunogen for anti-TRIM48 antibody: synthetic peptide directed towards the C terminal of human TRIM48. Synthetic peptide located within the following region: NVETTRISHWKAFGDILYRSESVLLHMPQPLNLALRAGPITGLRDRLNQF
Formulation:	Liquid. Purified antibody supplied in 1x PBS buffer with 0.09% (w/v) sodium azide and 2% sucrose.
Concentration:	lot specific
Purification:	Protein A purified
Conjugation:	Unconjugated
Storage:	Store at -20°C as received.
Stability:	Stable for 12 months from date of receipt.
Predicted Protein Size:	24 kDa
Gene Name:	tripartite motif containing 48
Database Link:	<a href="#">NP_077019</a> <a href="#">Entrez Gene 79097 Human</a> <a href="#">Q8IWZ4</a>
Background:	TRIM48 belongs to the TRIM/RBCC family. It contains 1 B box-type zinc finger, 1 B30.2/SPRY domain and 1 RING-type zinc finger. The exact function of TRIM48 remains unknown.
Synonyms:	RNF101
Note:	Immunogen Sequence Homology: Human: 100%; Pig: 92%
Protein Families:	Druggable Genome


[View online »](#)

**Product images:**


WB Suggested Anti-TRIM48 Antibody Titration:  
0.2-1 ug/ml; Positive Control: Human Liver