

Product datasheet for **TA339241**

KLHDC5 (KLHL42) Rabbit Polyclonal Antibody

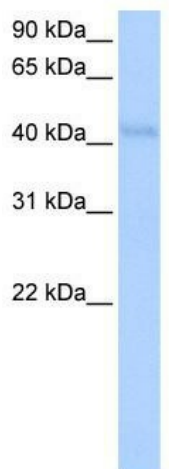
Product data:

Product Type:	Primary Antibodies
Applications:	WB
Recommended Dilution:	WB
Reactivity:	Human
Host:	Rabbit
Isotype:	IgG
Clonality:	Polyclonal
Immunogen:	The immunogen for anti-KLHDC5 antibody: synthetic peptide directed towards the N terminal of human KLHDC5. Synthetic peptide located within the following region: LQEACLRFMVVFHFEVLCKPQFHLLGSPQAPGDVSLKQRLREARMTGTP
Formulation:	Liquid. Purified antibody supplied in 1x PBS buffer with 0.09% (w/v) sodium azide and 2% sucrose.
Concentration:	lot specific
Purification:	Protein A purified
Conjugation:	Unconjugated
Storage:	Store at -20°C as received.
Stability:	Stable for 12 months from date of receipt.
Predicted Protein Size:	57 kDa
Gene Name:	kelch like family member 42
Database Link:	NP_065833 Entrez Gene 57542 Human Q9P2K6
Background:	KLHL42 contains 1 BTB (POZ) domain and 6 Kelch repeats. It is phosphorylated upon DNA damage, probably by ATM or ATR. The exact functions of KLHL42 remain unknown.
Synonyms:	Ctb9; KLHDC5
Note:	Immunogen Sequence Homology: Horse: 100%; Human: 100%; Pig: 93%; Rat: 93%; Mouse: 93%; Bovine: 93%; Rabbit: 93%; Dog: 85%



[View online »](#)

Product images:



WB Suggested Anti-KLHL42 Antibody Titration:
0.2-1 ug/ml; Positive Control: HepG2 cell lysate