

## Product datasheet for **TA339238**

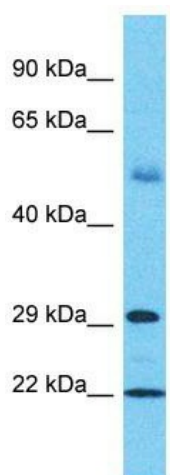
### ZNF562 Rabbit Polyclonal Antibody

#### Product data:

Product Type:	Primary Antibodies
Applications:	WB
Recommended Dilution:	WB
Reactivity:	Human
Host:	Rabbit
Isotype:	IgG
Clonality:	Polyclonal
Immunogen:	The immunogen for Anti-ZNF562 antibody is: synthetic peptide directed towards the C-terminal region of Human ZNF562. Synthetic peptide located within the following region: CKECGQAFQTGLAIHIRNHTGEKPYQCKEKGKAFNRSSTLTQHRRHT
Formulation:	Liquid. Purified antibody supplied in 1x PBS buffer with 0.09% (w/v) sodium azide and 2% sucrose.
Concentration:	lot specific
Purification:	Protein A purified
Conjugation:	Unconjugated
Storage:	Store at -20°C as received.
Stability:	Stable for 12 months from date of receipt.
Predicted Protein Size:	34 kDa
Gene Name:	zinc finger protein 562
Database Link:	<a href="#">NP_001123503</a> <a href="#">Entrez Gene 54811 Human</a> <a href="#">Q6V9R5</a>
Background:	The function of this protein remains unknown.
Synonyms:	FLJ20079; MGC126160
Note:	Immunogen Sequence Homology: Human: 100%; Dog: 85%; Pig: 85%; Rat: 85%; Horse: 85%; Mouse: 85%; Yeast: 83%; Bovine: 83%; Rabbit: 83%; Zebrafish: 83%; Guinea pig: 83%
Protein Families:	Transcription Factors



[View online »](#)

**Product images:**

Host: Rabbit

Target Name: ZNF562

Sample Tissue: Thymus Tumor Lysate

Antibody Dilution: 1.0 µg/ml

Host: Rabbit; Target Name: ZNF562; Sample  
Tissue: Thymus Tumor lysates; Antibody Dilution:  
1.0 ug/ml