

Product datasheet for **TA339237**

ZNF562 Rabbit Polyclonal Antibody

Product data:

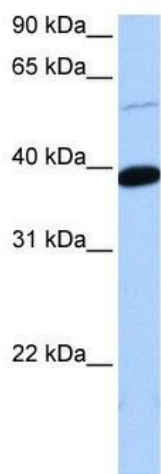
Product Type:	Primary Antibodies
Applications:	WB
Recommended Dilution:	WB
Reactivity:	Human
Host:	Rabbit
Isotype:	IgG
Clonality:	Polyclonal
Immunogen:	The immunogen for anti-ZNF562 antibody: synthetic peptide directed towards the middle region of human ZNF562. Synthetic peptide located within the following region: KQCVAVHTGKKSEKTKNCGKSFTNFSQLSAHAKTHKGESFECKECCGRSF
Formulation:	Liquid. Purified antibody supplied in 1x PBS buffer with 0.09% (w/v) sodium azide and 2% sucrose.
Concentration:	lot specific
Purification:	Protein A purified
Conjugation:	Unconjugated
Storage:	Store at -20°C as received.
Stability:	Stable for 12 months from date of receipt.
Predicted Protein Size:	40 kDa
Gene Name:	zinc finger protein 562
Database Link:	NP_060126 Entrez Gene 54811 Human Q6V9R5
Background:	ZNF562 belongs to the krueppel C2H2-type zinc-finger protein family. It contains 8 C2H2-type zinc fingers and 1 KRAB domain. ZNF562 may be involved in transcriptional regulation.
Synonyms:	FLJ20079; MGC126160
Note:	Immunogen Sequence Homology: Human: 100%; Rat: 85%; Dog: 79%; Pig: 79%; Horse: 79%; Bovine: 79%



[View online »](#)

Protein Families: Transcription Factors

Product images:



WB Suggested Anti-ZNF562 Antibody Titration:
0.2-1 ug/ml; Positive Control: 721_B cell lysate.
ZNF562 is supported by BioGPS gene expression
data to be expressed in 721_B