

Product datasheet for **TA339236**

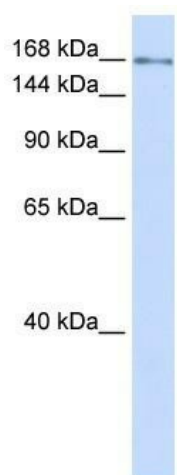
IFT172 Rabbit Polyclonal Antibody

Product data:

Product Type:	Primary Antibodies
Applications:	WB
Recommended Dilution:	WB
Reactivity:	Human
Host:	Rabbit
Isotype:	IgG
Clonality:	Polyclonal
Immunogen:	The immunogen for anti-IFT172 antibody: synthetic peptide directed towards the N terminal of human IFT172. Synthetic peptide located within the following region: VKILGKERYLVAHTSETLLLGLDNTNRLSEIAWQGSGGNEKYFFENENVC
Formulation:	Liquid. Purified antibody supplied in 1x PBS buffer with 0.09% (w/v) sodium azide and 2% sucrose.
Concentration:	lot specific
Purification:	Protein A purified
Conjugation:	Unconjugated
Storage:	Store at -20°C as received.
Stability:	Stable for 12 months from date of receipt.
Predicted Protein Size:	197 kDa
Gene Name:	intraflagellar transport 172
Database Link:	NP_056477 Entrez Gene 26160 Human Q9UG01
Background:	IFT172 is required for the maintenance and formation of cilia. IT plays an indirect role in hedgehog (Hh) signaling, cilia being required for all activity of the hedgehog pathway.
Synonyms:	BBS20; NPHP17; osm-1; RP71; SLB; SRTD10; wim
Note:	Immunogen Sequence Homology: Dog: 100%; Pig: 100%; Rat: 100%; Horse: 100%; Human: 100%; Mouse: 100%; Bovine: 100%; Rabbit: 100%; Guinea pig: 100%; Zebrafish: 93%



[View online »](#)

Product images:

WB Suggested Anti-IFT172 Antibody Titration: 0.2-1 ug/ml; ELISA Titer: 1: 312500; Positive Control: Human Lung