

Product datasheet for **TA339233**

SERTAD2 Rabbit Polyclonal Antibody

Product data:

Product Type:	Primary Antibodies
Applications:	WB
Recommended Dilution:	WB
Reactivity:	Human
Host:	Rabbit
Isotype:	IgG
Clonality:	Polyclonal
Immunogen:	The immunogen for anti-SERTAD2 antibody: synthetic peptide directed towards the N terminal of human SERTAD2. Synthetic peptide located within the following region: LQRQTIFNISLMKLYNHRPLTEPSLQKTVLNNMLRRIQEELKQEGSLRP
Formulation:	Liquid. Purified antibody supplied in 1x PBS buffer with 0.09% (w/v) sodium azide and 2% sucrose. <i>Note that this product is shipped as lyophilized powder to China customers.</i>
Concentration:	lot specific
Purification:	Protein A purified
Conjugation:	Unconjugated
Storage:	Store at -20°C as received.
Stability:	Stable for 12 months from date of receipt.
Predicted Protein Size:	34 kDa
Gene Name:	SERTA domain containing 2
Database Link:	NP_055570 Entrez Gene 9792 Human Q14140
Background:	SERTAD2 acts at E2F-responsive promoters to integrate signals provided by PHD- and/or bromodomain-containing transcription factors.
Synonyms:	Sei-2; TRIP-Br2

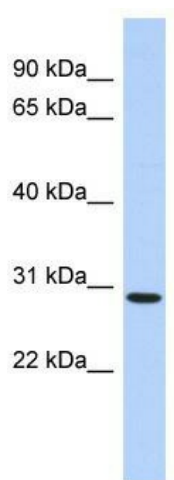


[View online »](#)

Note: Immunogen Sequence Homology: Pig: 100%; Rat: 100%; Horse: 100%; Human: 100%; Mouse: 100%; Bovine: 100%; Guinea pig: 100%; Rabbit: 93%; Zebrafish: 77%

Protein Families: Transcription Factors

Product images:



WB Suggested Anti-SERTAD2 Antibody Titration: 0.2-1 ug/ml; ELISA Titer: 1: 312500; Positive Control: COLO205 cell lysate SERTAD2 is supported by BioGPS gene expression data to be expressed in COLO205