

## Product datasheet for **TA339230**

### ZNF73 Rabbit Polyclonal Antibody

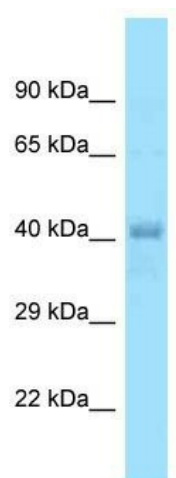
#### Product data:

Product Type:	Primary Antibodies
Applications:	WB
Recommended Dilution:	WB
Reactivity:	Human
Host:	Rabbit
Isotype:	IgG
Clonality:	Polyclonal
Immunogen:	The immunogen for Anti-ZNF73 antibody is: synthetic peptide directed towards the N-terminal region of ZNF73. Synthetic peptide located within the following region: QVRQPTCCRKSDFSKHQQTHTGKPECEKPSISKSDLMIQHKMPTE
Formulation:	Liquid. Purified antibody supplied in 1x PBS buffer with 0.09% (w/v) sodium azide and 2% sucrose.
Concentration:	lot specific
Purification:	Protein A purified
Conjugation:	Unconjugated
Storage:	Store at -20°C as received.
Stability:	Stable for 12 months from date of receipt.
Predicted Protein Size:	36 kDa
Database Link:	<a href="#">NP_036612</a> <a href="#">Entrez Gene 7624 Human</a>
Background:	ZNF73 may be involved in transcriptional regulation.
Note:	Immunogen Sequence Homology: Human: 100%; Mouse: 100%; Rat: 77%; Rabbit: 77%



[View online »](#)

## Product images:



WB Suggested Anti-ZNF73 Antibody; Titration: 1.0 ug/ml; Positive Control: ACHN Whole Cell