

Product datasheet for **TA339227**

MBNL2 Rabbit Polyclonal Antibody

Product data:

Product Type:	Primary Antibodies
Applications:	WB
Recommended Dilution:	WB
Reactivity:	Human
Host:	Rabbit
Isotype:	IgG
Clonality:	Polyclonal
Immunogen:	The immunogen for anti-MBNL2 antibody: synthetic peptide directed towards the middle region of human MBNL2. Synthetic peptide located within the following region: ENGRVIACFDSLKGRCsRENCKYLHPPTHlKTQLEINGRNnLIQQTAA
Formulation:	Liquid. Purified antibody supplied in 1x PBS buffer with 0.09% (w/v) sodium azide and 2% sucrose.
Concentration:	lot specific
Purification:	Protein A purified
Conjugation:	Unconjugated
Storage:	Store at -20°C as received.
Stability:	Stable for 12 months from date of receipt.
Predicted Protein Size:	28 kDa
Database Link:	NP_005748 Entrez Gene 10150 Human
Background:	MBNL2 is a C3H-type zinc finger protein, which is similar to the Drosophila melanogaster muscleblind B protein. MBNL2 is a RNA-binding protein that binds to 5'ACACCC-3' core sequence. It binds to CUG triplet repeat expansion in myotonic dystrophy muscle cells by sequestering the target RNAs. MBNL2 seems to regulate expression and localization of ITGA3 by transporting it from the nucleus to cytoplasm. It may play a role in myotonic dystrophy pathophysiology (DM).



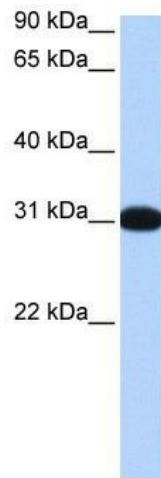
[View online »](#)

Synonyms: DKFZp781H1296; MBLL; MBLL39; MGC120625; MGC120626; MGC120628; muscleblind-like 2; muscleblind-like 2 (Drosophila); OTTHUMP00000018578; OTTHUMP00000040762; OTTHUMP00000178763; PRO2032

Note: Immunogen Sequence Homology: Dog: 100%; Pig: 100%; Rat: 100%; Human: 100%; Mouse: 100%; Bovine: 100%; Rabbit: 100%; Guinea pig: 100%; Horse: 93%; Zebrafish: 93%

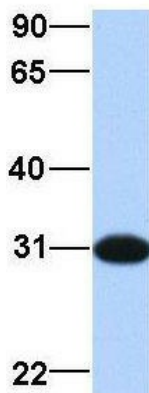
Protein Families: Transcription Factors

Product images:



WB Suggested Anti-MBNL2 Antibody Titration:
0.2-1 ug/ml; Positive Control: Human brain

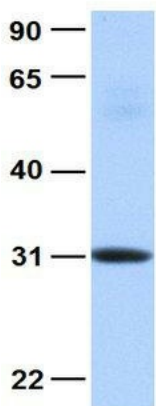
MBNL2



Rabbit Anti-MBNL2
Sample Type: Human Fetal Brain
Antibody Concentration: 1ug/mL

Host: Rabbit; Target Name: MBNL2; Sample
Tissue: Human Fetal Brain; Antibody Dilution: 1.0
ug/ml

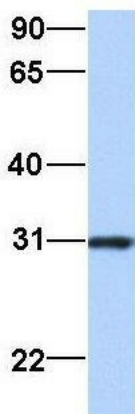
MBNL2



Rabbit Anti-MBNL2
Sample Type: Human Fetal Heart
Antibody Concentration: 1ug/mL

Host: Rabbit; Target Name: MBNL2; Sample
Tissue: Human Fetal Heart; Antibody Dilution: 1.0
ug/ml

MBNL2



Rabbit Anti-MBNL2
Sample Type: Human HeLa
Antibody Concentration: 1ug/mL

Host: Rabbit; Target Name: MBNL2; Sample
Tissue: HeLa; Antibody Dilution: 1.0 ug/ml There is
BioGPS gene expression data showing that
MBNL2 is expressed in HeLa