

Product datasheet for **TA339225**

CBX2 Rabbit Polyclonal Antibody

Product data:

Product Type:	Primary Antibodies
Applications:	WB
Recommended Dilution:	WB
Reactivity:	Human
Host:	Rabbit
Isotype:	IgG
Clonality:	Polyclonal
Immunogen:	The immunogen for anti-CBX2 antibody: synthetic peptide directed towards the N terminal of human CBX2. Synthetic peptide located within the following region: SSSSSSSTSSSSSSDEEDSDLDKRGPRGRETHPVPQKKAQILVAKPEL
Formulation:	Liquid. Purified antibody supplied in 1x PBS buffer with 0.09% (w/v) sodium azide and 2% sucrose. <i>Note that this product is shipped as lyophilized powder to China customers.</i>
Concentration:	lot specific
Purification:	Protein A purified
Conjugation:	Unconjugated
Storage:	Store at -20°C as received.
Stability:	Stable for 12 months from date of receipt.
Predicted Protein Size:	56 kDa
Gene Name:	chromobox 2
Database Link:	NP_005180 Entrez Gene 84733 Human Q14781



[View online »](#)

Background: CBX2 Contains 1 A.T hook DNA-binding domain and 1 chromo domain. CBX2 is a component of the Polycomb group (PcG) multiprotein PRC1 complex, a complex required to maintain the transcriptionally repressive state of many genes, including Hox genes, throughout development. PcG PRC1 complex acts via chromatin remodeling and modification of histones; it mediates monoubiquitination of histone H2A 'Lys-119', rendering chromatin heritably changed in its expressibility.

Synonyms: CDCA6; M33; SRXY5

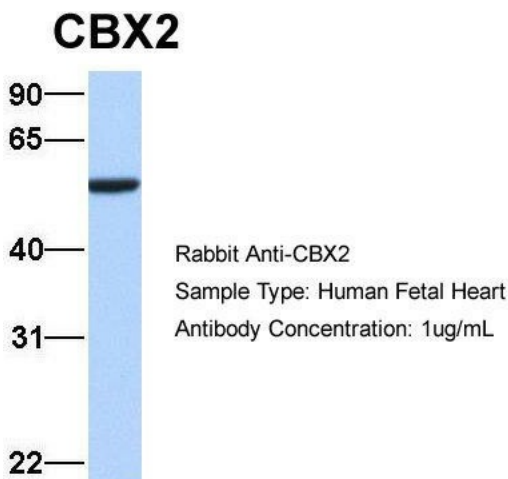
Note: Immunogen Sequence Homology: Dog: 100%; Pig: 100%; Rat: 100%; Human: 100%; Mouse: 100%; Bovine: 100%; Rabbit: 100%; Guinea pig: 100%; Horse: 93%

Protein Families: Transcription Factors

Product images:

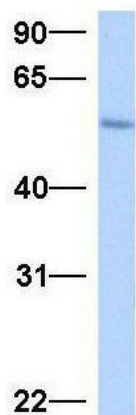


WB Suggested Anti-CBX2 Antibody Titration: 0.2-1 ug/ml; Positive Control: Human heart



Host: Rabbit; Target Name: CBX2; Sample Tissue: Human Fetal Heart; Antibody Dilution: 1.0 ug/ml

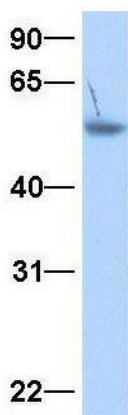
CBX2



Rabbit Anti-CBX2
Sample Type: Human Fetal Liver
Antibody Concentration: 1ug/mL

Host: Rabbit; Target Name: CBX2; Sample Tissue:
Human Fetal Liver; Antibody Dilution: 1.0 ug/ml

CBX2



Rabbit Anti-CBX2
Sample Type: Human Adult
Placenta
Antibody Concentration: 1ug/mL

Host: Rabbit; Target Name: CBX2; Sample Tissue:
Human Adult Placenta; Antibody Dilution: 1.0
ug/ml