

Product datasheet for **TA339223**

TRIP6 Rabbit Polyclonal Antibody

Product data:

Product Type:	Primary Antibodies
Applications:	WB
Recommended Dilution:	WB
Reactivity:	Human
Host:	Rabbit
Isotype:	IgG
Clonality:	Polyclonal
Immunogen:	The immunogen for anti-TRIP6 antibody: synthetic peptide directed towards the middle region of human TRIP6. Synthetic peptide located within the following region: ASTPAGPAFPVQVKVAQPVRGCGPPRRGASQASGPLPGPHFPLPGRGEVW
Formulation:	Liquid. Purified antibody supplied in 1x PBS buffer with 0.09% (w/v) sodium azide and 2% sucrose. <i>Note that this product is shipped as lyophilized powder to China customers.</i>
Concentration:	lot specific
Purification:	Protein A purified
Conjugation:	Unconjugated
Storage:	Store at -20°C as received.
Stability:	Stable for 12 months from date of receipt.
Predicted Protein Size:	50 kDa
Gene Name:	thyroid hormone receptor interactor 6
Database Link:	NP_003293 Entrez Gene 7205 Human Q15654



[View online »](#)

Background:

TRIP6 is a member of the zyxin family and encodes a protein with three LIM zinc-binding domains. This protein localizes to focal adhesion sites and along actin stress fibers. Recruitment of TRIP6 to the plasma membrane occurs in a lysophosphatidic acid (LPA)-dependent manner and it regulates LPA-induced cell migration. This gene is a member of the zyxin family and encodes a protein with three LIM zinc-binding domains. This protein localizes to focal adhesion sites and along actin stress fibers. Recruitment of this protein to the plasma membrane occurs in a lysophosphatidic acid (LPA)-dependent manner and it regulates LPA-induced cell migration. Alternatively spliced variants which encode different protein isoforms have been described; however, not all variants have been fully characterized. Publication Note: This RefSeq record includes a subset of the publications that are available for this gene. Please see the Entrez Gene record to access additional publications.

Synonyms:

OIP-1; OIP1; TRIP-6; TRIP6i2; ZRP-1

Note:

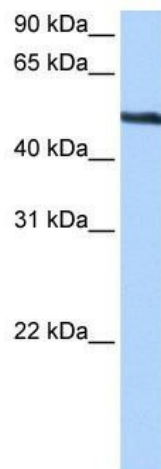
Immunogen Sequence Homology: Pig: 100%; Rat: 100%; Horse: 100%; Human: 100%; Mouse: 100%; Guinea pig: 100%; Dog: 93%; Bovine: 93%

Protein Families:

Druggable Genome

Protein Pathways:

NOD-like receptor signaling pathway

Product images:

WB Suggested Anti-TRIP6 Antibody Titration: 0.2-1 ug/ml; Positive Control: HepG2 cell lysate