

Product datasheet for **TA339219**

EME2 Rabbit Polyclonal Antibody

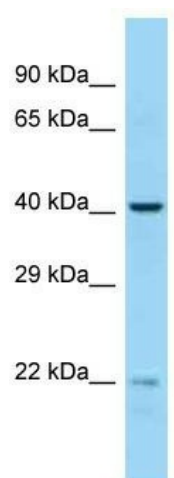
Product data:

Product Type:	Primary Antibodies
Applications:	WB
Recommended Dilution:	WB
Reactivity:	Human
Host:	Rabbit
Isotype:	IgG
Clonality:	Polyclonal
Immunogen:	The immunogen for Anti-EME2 antibody is: synthetic peptide directed towards the middle region of Human EME2. Synthetic peptide located within the following region: TTARPHLAVIGLDAYLWSRQHVSRTQQPESPKVAGAEVAVSWPEVEEV
Formulation:	Liquid. Purified antibody supplied in 1x PBS buffer with 0.09% (w/v) sodium azide and 2% sucrose. <i>Note that this product is shipped as lyophilized powder to China customers.</i>
Concentration:	lot specific
Purification:	Protein A purified
Conjugation:	Unconjugated
Storage:	Store at -20°C as received.
Stability:	Stable for 12 months from date of receipt.
Predicted Protein Size:	41 kDa
Gene Name:	essential meiotic structure-specific endonuclease subunit 2
Database Link:	NP_001010865 Entrez Gene 197342 Human A4GXA9
Background:	EME2 forms a heterodimer with MUS81 that functions as an XPF-type flap/fork endonuclease in DNA repair .
Synonyms:	FLJ00151; gs125; SLX2B
Note:	Immunogen Sequence Homology: Human: 100%



[View online »](#)

Product images:



Host: Rabbit; Target Name: EME2; Sample Tissue: MCF7 Whole cell lysates; Antibody Dilution: 1.0 ug/ml