

Product datasheet for **TA339218**

ZNF33A Rabbit Polyclonal Antibody

Product data:

Product Type:	Primary Antibodies
Applications:	WB
Recommended Dilution:	WB
Reactivity:	Human
Host:	Rabbit
Isotype:	IgG
Clonality:	Polyclonal
Immunogen:	The immunogen for anti-ZNF33A antibody: synthetic peptide directed towards the middle region of human ZNF33A. Synthetic peptide located within the following region: LQKGDKGKGFECNECGKAFWEKSHLTRHQVHTGQKPFQCNECEKAFWD
Formulation:	Liquid. Purified antibody supplied in 1x PBS buffer with 0.09% (w/v) sodium azide and 2% sucrose. <i>Note that this product is shipped as lyophilized powder to China customers.</i>
Concentration:	lot specific
Purification:	Protein A purified
Conjugation:	Unconjugated
Storage:	Store at -20°C as received.
Stability:	Stable for 12 months from date of receipt.
Predicted Protein Size:	80 kDa
Gene Name:	zinc finger protein 33A
Database Link:	NP_008885 Entrez Gene 7581 Human Q06730
Background:	ZNF33A belongs to the krueppel C2H2-type zinc-finger protein family. It contains 16 C2H2-type zinc fingers and 1 KRAB domain. ZNF33A may be involved in transcriptional regulation.
Synonyms:	KOX2; KOX5; KOX31; NF11A; ZNF11; ZNF11A; ZNF33; ZZAPK

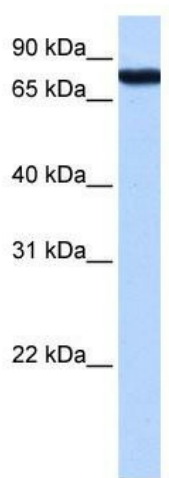


[View online »](#)

Note: Immunogen Sequence Homology: Human: 100%; Horse: 92%; Zebrafish: 92%; Dog: 86%; Pig: 86%; Rat: 86%; Mouse: 86%; Sheep: 86%; Bovine: 86%; Rabbit: 86%; Guinea pig: 86%

Protein Families: Transcription Factors, Transmembrane

Product images:



WB Suggested Anti-ZNF33A Antibody Titration:
0.2-1 ug/ml; Positive Control: HeLa cell lysate