

Product datasheet for **TA339216**

GBX1 Rabbit Polyclonal Antibody

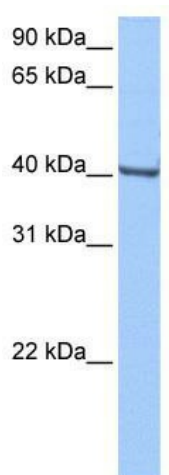
Product data:

Product Type:	Primary Antibodies
Applications:	WB
Recommended Dilution:	WB
Reactivity:	Human
Host:	Rabbit
Isotype:	IgG
Clonality:	Polyclonal
Immunogen:	The immunogen for anti-GBX-1 antibody: synthetic peptide directed towards the middle region of human GBX-1. Synthetic peptide located within the following region: AKWKRIKAGNVSSRSRGEPVRNPKIVVPIPVHVNRFVRSQHQQMEQGARP
Formulation:	Liquid. Purified antibody supplied in 1x PBS buffer with 0.09% (w/v) sodium azide and 2% sucrose.
Concentration:	lot specific
Purification:	Protein A purified
Conjugation:	Unconjugated
Storage:	Store at -20°C as received.
Stability:	Stable for 12 months from date of receipt.
Predicted Protein Size:	40 kDa
Gene Name:	gastrulation brain homeobox 1
Database Link:	NP_001092304 Entrez Gene 2636 Human Q14549
Background:	GBX1 contains 1 homeobox DNA-binding domain. The exact functions of GBX1 remain unknown.
Synonyms:	Huh-17
Note:	Immunogen Sequence Homology: Dog: 100%; Pig: 100%; Rat: 100%; Horse: 100%; Human: 100%; Mouse: 100%; Bovine: 100%; Rabbit: 100%; Zebrafish: 100%; Guinea pig: 100%



[View online »](#)

Product images:



WB Suggested Anti-GBX1 Antibody Titration: 0.2-1 ug/ml; Positive Control: HepG2 cell lysate