

## Product datasheet for **TA339213**

### Plasminogen (PLG) Rabbit Polyclonal Antibody

#### Product data:

Product Type:	Primary Antibodies
Applications:	WB
Recommended Dilution:	WB
Reactivity:	Human
Host:	Rabbit
Isotype:	IgG
Clonality:	Polyclonal
Immunogen:	The immunogen for anti-PLG antibody: synthetic peptide directed towards the middle region of human PLG. Synthetic peptide located within the following region: LISPEWVLTAAHCLEKSPRPSSYKVLGAHQEVNLEPHVQEIEVSRLFLE
Formulation:	Liquid. Purified antibody supplied in 1x PBS buffer with 0.09% (w/v) sodium azide and 2% sucrose. <i>Note that this product is shipped as lyophilized powder to China customers.</i>
Concentration:	lot specific
Purification:	Protein A purified
Conjugation:	Unconjugated
Storage:	Store at -20°C as received.
Stability:	Stable for 12 months from date of receipt.
Predicted Protein Size:	88 kDa
Gene Name:	plasminogen
Database Link:	<a href="#">NP_000292</a> <a href="#">Entrez Gene 5340 Human P00747</a>
Background:	The protein encoded by this gene is a secreted blood zymogen that is activated by proteolysis and converted to plasmin and angiostatin. Plasmin dissolves fibrin in blood clots and is an important protease in many other cellular processes while angiostatin
Synonyms:	DKFZp779M0222



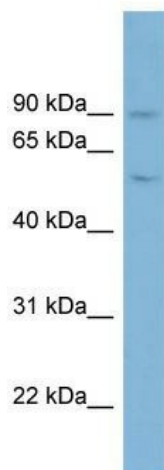
[View online »](#)

**Note:** Immunogen Sequence Homology: Human: 100%; Pig: 86%; Dog: 79%; Rat: 79%; Mouse: 79%; Rabbit: 79%

**Protein Families:** Druggable Genome, Protease, Secreted Protein

**Protein Pathways:** Complement and coagulation cascades, Neuroactive ligand-receptor interaction

**Product images:**



WB Suggested Anti-PLG Antibody Titration: 0.2-1 ug/ml; ELISA Titer: 1: 1562500; Positive Control: PANC1 cell lysate PLG is supported by BioGPS gene expression data to be expressed in PANC1