

## Product datasheet for TA339211

### HNF1 alpha (HNF1A) Rabbit Polyclonal Antibody

#### Product data:

Product Type:	Primary Antibodies
Applications:	IHC, WB
Recommended Dilution:	WB, IHC
Reactivity:	Human
Host:	Rabbit
Isotype:	IgG
Clonality:	Polyclonal
Immunogen:	The immunogen for anti-HNF1A antibody: synthetic peptide directed towards the N terminal of human HNF1A. Synthetic peptide located within the following region: HAGQGGLIEEPTGDELPTKKGRRNRFKWGPASQILFQAYERQKNPSKEE
Formulation:	Liquid. Purified antibody supplied in 1x PBS buffer with 0.09% (w/v) sodium azide and 2% sucrose. <i>Note that this product is shipped as lyophilized powder to China customers.</i>
Concentration:	lot specific
Purification:	Protein A purified
Conjugation:	Unconjugated
Storage:	Store at -20°C as received.
Stability:	Stable for 12 months from date of receipt.
Predicted Protein Size:	67 kDa
Gene Name:	HNF1 homeobox A
Database Link:	<a href="#">NP_000536</a> <a href="#">Entrez Gene 6927 Human P20823</a>
Background:	HNF1A is required for the expression of several liver specific genes. HNF1A binds to the inverted palindrome 5'-GTTAATNATTAAC-3'.
Synonyms:	HNF-1A; HNF1; IDDM20; LFB1; MODY3; TCF-1; TCF1



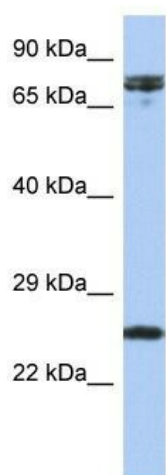
[View online »](#)

**Note:** Immunogen Sequence Homology: Dog: 100%; Pig: 100%; Rat: 100%; Horse: 100%; Human: 100%; Mouse: 100%; Guinea pig: 100%; Bovine: 93%

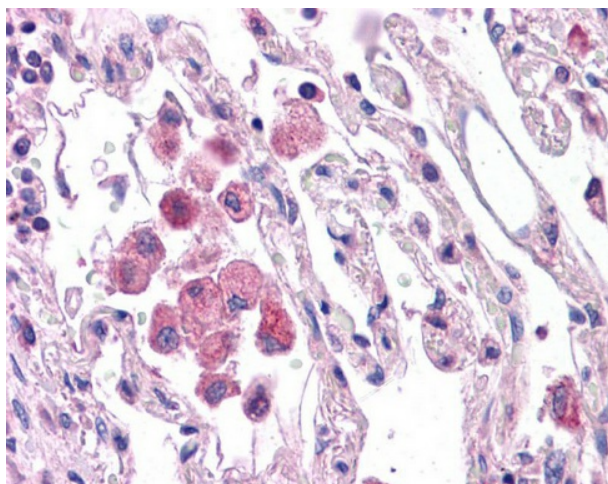
**Protein Families:** Adult stem cells, Druggable Genome, ES Cell Differentiation/IPS, Transcription Factors

**Protein Pathways:** Maturity onset diabetes of the young

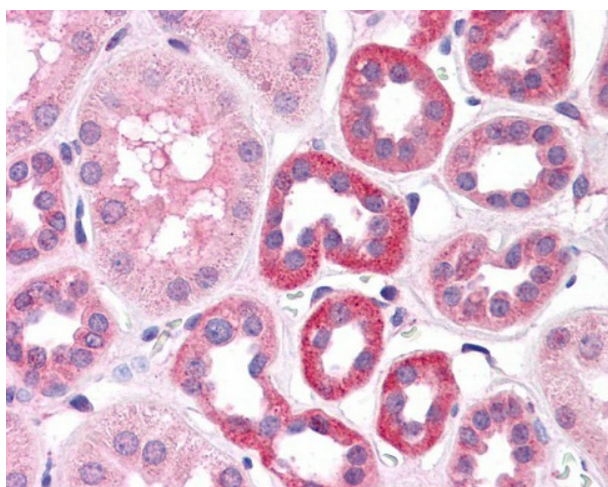
### Product images:



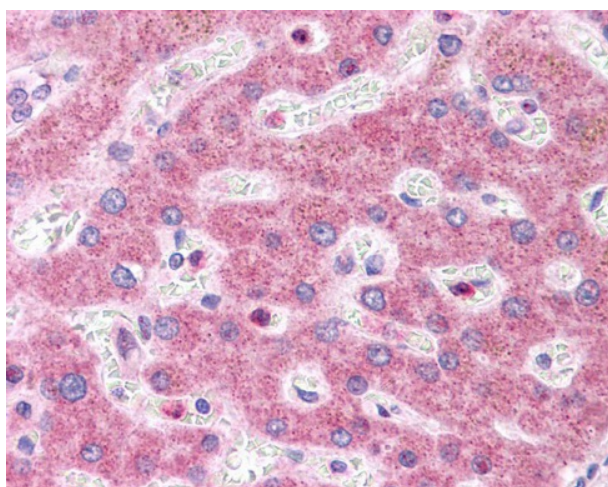
WB Suggested Anti-HNF1A Antibody Titration:  
0.2-1 ug/ml; ELISA Titer: 1: 62500; Positive  
Control: OVCAR-3 cell lysate HNF1A is supported  
by BioGPS gene expression data to be expressed  
in OVCAR3



Human Lung



Human Liver



Human kidney