

Product datasheet for **TA339207**

Aspartate beta hydroxylase (ASPH) Rabbit Polyclonal Antibody

Product data:

Product Type:	Primary Antibodies
Applications:	IHC, WB
Recommended Dilution:	WB, IHC
Reactivity:	Human
Host:	Rabbit
Isotype:	IgG
Clonality:	Polyclonal
Immunogen:	The immunogen for anti-ASPH antibody: synthetic peptide directed towards the N terminal of human ASPH. Synthetic peptide located within the following region: SEVLQGKLGIDADGDGDFDVEDDAKVLLEGPSGVAKRRTKAKVKELTKEE
Formulation:	Liquid. Purified antibody supplied in 1x PBS buffer with 0.09% (w/v) sodium azide and 2% sucrose. <i>Note that this product is shipped as lyophilized powder to China customers.</i>
Concentration:	lot specific
Purification:	Protein A purified
Conjugation:	Unconjugated
Storage:	Store at -20°C as received.
Stability:	Stable for 12 months from date of receipt.
Predicted Protein Size:	25 kDa
Gene Name:	aspartate beta-hydroxylase
Database Link:	NP_064549 Entrez Gene 444 Human Q12797



[View online »](#)

Background:

ASPH is thought to play an important role in calcium homeostasis. Alternative splicing of this gene results in five transcript variants which vary in protein translation, the coding of catalytic domains, and tissue expression. Variation among these transcripts impacts their functions which involve roles in the calcium storage and release process in the endoplasmic and sarcoplasmic reticulum as well as hydroxylation of aspartic acid and asparagine in epidermal growth factor-like domains of various proteins. This gene is thought to play an important role in calcium homeostasis. Alternative splicing of this gene results in five transcript variants which vary in protein translation, the coding of catalytic domains, and tissue expression. Variation among these transcripts impacts their functions which involve roles in the calcium storage and release process in the endoplasmic and sarcoplasmic reticulum as well as hydroxylation of aspartic acid and asparagine in epidermal growth factor-like domains of various proteins.

Synonyms:

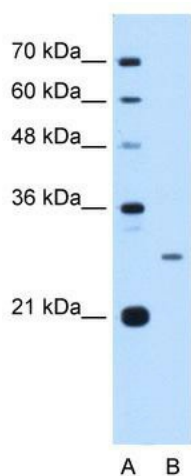
AAH; BAH; CASQ2BP1; FDLAB; HAAH; JCTN; junctin

Note:

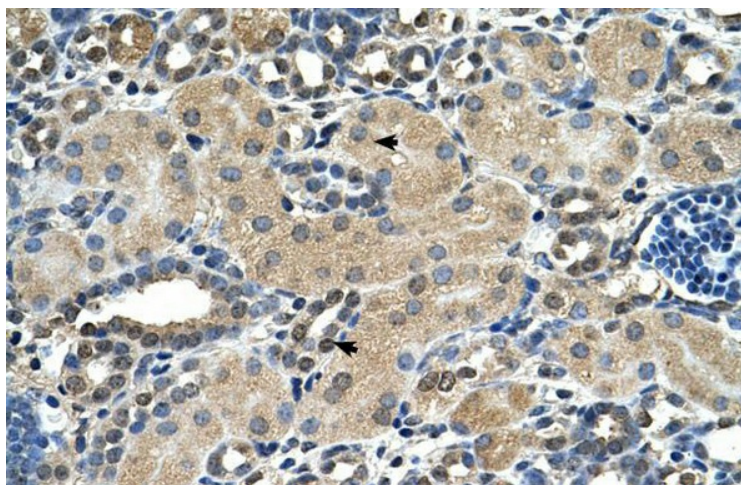
Immunogen Sequence Homology: Human: 100%; Dog: 93%; Pig: 93%; Rat: 86%; Mouse: 86%; Rabbit: 86%; Horse: 83%

Protein Families:

Druggable Genome, Transmembrane

Product images:

WB Suggested Anti-ASPH Antibody Titration: 2.5 ug/ml; Positive Control: HepG2 cell lysate
There is BioGPS gene expression data showing that ASPH is expressed in HepG2



Human kidney