

## Product datasheet for **TA339206**

### Aspartate beta hydroxylase (ASPH) Rabbit Polyclonal Antibody

#### Product data:

Product Type:	Primary Antibodies
Applications:	WB
Recommended Dilution:	WB
Reactivity:	Human
Host:	Rabbit
Isotype:	IgG
Clonality:	Polyclonal
Immunogen:	The immunogen for anti-ASPH antibody: synthetic peptide directed towards the N terminal of human ASPH. Synthetic peptide located within the following region: MAEDKETKHGGHKNGRKGGLSGTSFFTWFMVIALLGWVTSVAVVWFDLVD
Formulation:	Liquid. Purified antibody supplied in 1x PBS buffer with 0.09% (w/v) sodium azide and 2% sucrose. <i>Note that this product is shipped as lyophilized powder to China customers.</i>
Concentration:	lot specific
Purification:	Protein A purified
Conjugation:	Unconjugated
Storage:	Store at -20°C as received.
Stability:	Stable for 12 months from date of receipt.
Predicted Protein Size:	25 kDa
Gene Name:	aspartate beta-hydroxylase
Database Link:	<a href="#">NP_064549</a> <a href="#">Entrez Gene 444 Human</a> <a href="#">Q12797</a>



[View online »](#)

**Background:**

ASPH is thought to play an important role in calcium homeostasis. Alternative splicing of this gene results in five transcript variants which vary in protein translation, the coding of catalytic domains, and tissue expression. Variation among these transcripts impacts their functions which involve roles in the calcium storage and release process in the endoplasmic and sarcoplasmic reticulum as well as hydroxylation of aspartic acid and asparagine in epidermal growth factor-like domains of various proteins. This gene is thought to play an important role in calcium homeostasis. Alternative splicing of this gene results in five transcript variants which vary in protein translation, the coding of catalytic domains, and tissue expression. Variation among these transcripts impacts their functions which involve roles in the calcium storage and release process in the endoplasmic and sarcoplasmic reticulum as well as hydroxylation of aspartic acid and asparagine in epidermal growth factor-like domains of various proteins.

**Synonyms:**

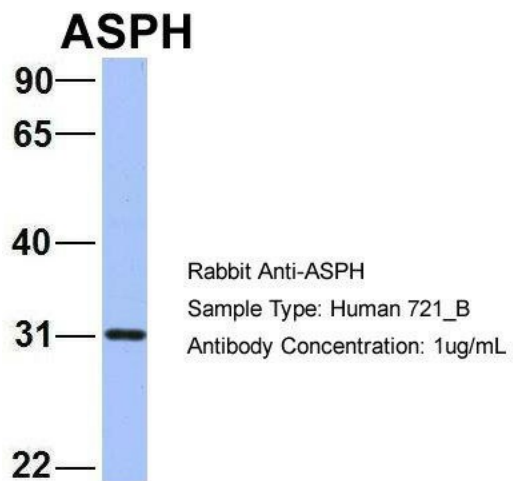
AAH; BAH; CASQ2BP1; FDLAB; HAAH; JCTN; junctin

**Note:**

Immunogen Sequence Homology: Dog: 100%; Rat: 100%; Human: 100%; Horse: 93%; Mouse: 92%; Pig: 86%; Bovine: 86%

**Protein Families:**

Druggable Genome, Transmembrane

**Product images:**


1Human 721\_B; Host: Rabbit; Target Name: ASPH; Sample Tissue: 721\_B; Antibody Dilution: 1.0 ug/ml ASPH is supported by BioGPS gene expression data to be expressed in 721\_B



WB Suggested Anti-ASPH Antibody Titration: 0.2-1 ug/ml; Positive Control: HepG2 cell lysate  
There is BioGPS gene expression data showing that ASPH is expressed in HepG2