

## Product datasheet for **TA339202**

### Cytochrome P450 3A4 (CYP3A4) Rabbit Polyclonal Antibody

#### Product data:

Product Type:	Primary Antibodies
Applications:	WB
Recommended Dilution:	WB
Reactivity:	Human
Host:	Rabbit
Isotype:	IgG
Clonality:	Polyclonal
Immunogen:	The immunogen for anti-CYP3A4 antibody: synthetic peptide directed towards the middle region of human CYP3A4. Synthetic peptide located within the following region: MIPSYALHRDPKYWTEPEKFLPERFSKKNKDNIDPYIYTPFGSGPRNCIG
Formulation:	Liquid. Purified antibody supplied in 1x PBS buffer with 0.09% (w/v) sodium azide and 2% sucrose. <i>Note that this product is shipped as lyophilized powder to China customers.</i>
Concentration:	lot specific
Purification:	Protein A purified
Conjugation:	Unconjugated
Storage:	Store at -20°C as received.
Stability:	Stable for 12 months from date of receipt.
Predicted Protein Size:	57 kDa
Gene Name:	cytochrome P450 family 3 subfamily A member 4
Database Link:	<a href="#">NP_059488</a> <a href="#">Entrez Gene 1576 Human P08684</a>
Background:	This gene, CYP3A4, encodes a member of the cytochrome P450 superfamily of enzymes. The cytochrome P450 proteins are monooxygenases which catalyze many reactions involved in drug metabolism and synthesis of cholesterol, steroids and other lipids. This prot
Synonyms:	CP33; CP34; CYP3A; CYP3A3; CYP3A4; CYP3A5; HLP; NF-25; P450C3; P450PCN1



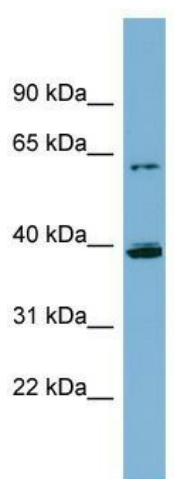
[View online »](#)

**Note:** Immunogen Sequence Homology: Human: 100%; Pig: 93%; Rat: 93%; Rabbit: 93%; Guinea pig: 93%; Horse: 92%; Goat: 86%; Mouse: 86%; Sheep: 86%; Bovine: 86%; Dog: 85%

**Protein Families:** Druggable Genome, ES Cell Differentiation/IPS, P450, Transmembrane

**Protein Pathways:** Drug metabolism - cytochrome P450, Drug metabolism - other enzymes, Linoleic acid metabolism, Metabolic pathways, Metabolism of xenobiotics by cytochrome P450, Retinol metabolism

**Product images:**



WB Suggested Anti-CYP3A4 Antibody Titration:  
0.2-1 ug/ml; Positive Control: THP-1 cell lysate