

Product datasheet for **TA339201**

Cytochrome P450 3A4 (CYP3A4) Rabbit Polyclonal Antibody

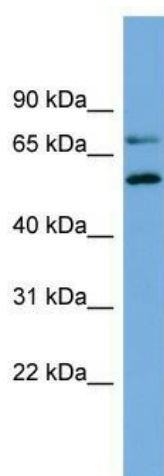
Product data:

Product Type:	Primary Antibodies
Applications:	WB
Recommended Dilution:	WB
Reactivity:	Human
Host:	Rabbit
Isotype:	IgG
Clonality:	Polyclonal
Immunogen:	The immunogen for anti-CYP3A4 antibody: synthetic peptide directed towards the middle region of human CYP3A4. Synthetic peptide located within the following region: KSVKRMKESRLEDTQKHRVDFLQLMIDSQNSKETESHKALSDLELVAQSI
Formulation:	Liquid. Purified antibody supplied in 1x PBS buffer with 0.09% (w/v) sodium azide and 2% sucrose. <i>Note that this product is shipped as lyophilized powder to China customers.</i>
Concentration:	lot specific
Purification:	Protein A purified
Conjugation:	Unconjugated
Storage:	Store at -20°C as received.
Stability:	Stable for 12 months from date of receipt.
Predicted Protein Size:	57 kDa
Gene Name:	cytochrome P450 family 3 subfamily A member 4
Database Link:	NP_059488 Entrez Gene 1576 Human P08684



[View online »](#)

Background:	This gene, CYP3A4, encodes a member of the cytochrome P450 superfamily of enzymes. The cytochrome P450 proteins are monooxygenases which catalyze many reactions involved in drug metabolism and synthesis of cholesterol, steroids and other lipids. This protein localizes to the endoplasmic reticulum and its expression is induced by glucocorticoids and some pharmacological agents. This enzyme is involved in the metabolism of approximately half the drugs which are used today, including acetaminophen, codeine, cyclosporin A, diazepam and erythromycin. The enzyme also metabolizes some steroids and carcinogens. This gene is part of a cluster of cytochrome P450 genes on chromosome 7q21.1. Previously another CYP3A gene, CYP3A3, was thought to exist; however, it is now thought that this sequence represents a transcript variant of CYP3A4.
Synonyms:	CP33; CP34; CYP3A; CYP3A3; CYP3A3; CYP3A3; CYP3A3; CYP3A3; HLP; NF-25; P450C3; P450PCN1
Note:	Immunogen Sequence Homology: Human: 100%; Pig: 86%; Rat: 86%; Guinea pig: 86%; Dog: 79%; Sheep: 79%; Bovine: 79%; Rabbit: 79%
Protein Families:	Druggable Genome, ES Cell Differentiation/IPS, P450, Transmembrane
Protein Pathways:	Drug metabolism - cytochrome P450, Drug metabolism - other enzymes, Linoleic acid metabolism, Metabolic pathways, Metabolism of xenobiotics by cytochrome P450, Retinol metabolism

Product images:

WB Suggested Anti-CYP3A4 Antibody Titration:
0.2-1 ug/ml; ELISA Titer: 1: 312500; Positive
Control: Human kidney