

## Product datasheet for **TA339199**

### IZUMO1 Rabbit Polyclonal Antibody

#### Product data:

Product Type:	Primary Antibodies
Applications:	WB
Recommended Dilution:	WB
Reactivity:	Human
Host:	Rabbit
Isotype:	IgG
Clonality:	Polyclonal
Immunogen:	The immunogen for anti-IZUMO1 antibody: synthetic peptide directed towards the C terminal of human IZUMO1. Synthetic peptide located within the following region: SLALITGLTFAIFRRRKVIDFIKSSLFGLGSGAAEQTVPKKATDSRQQ
Formulation:	Liquid. Purified antibody supplied in 1x PBS buffer with 0.09% (w/v) sodium azide and 2% sucrose. <i>Note that this product is shipped as lyophilized powder to China customers.</i>
Concentration:	lot specific
Purification:	Protein A purified
Conjugation:	Unconjugated
Storage:	Store at -20°C as received.
Stability:	Stable for 12 months from date of receipt.
Predicted Protein Size:	39 kDa
Gene Name:	izumo sperm-egg fusion 1
Database Link:	<a href="#">NP_872381</a> <a href="#">Entrez Gene 284359 Human</a> <a href="#">Q8IYV9</a>
Background:	The sperm-specific protein Izumo, named for a Japanese shrine dedicated to marriage, is essential for sperm-egg plasma membrane binding and fusion. The sperm-specific protein Izumo, named for a Japanese shrine dedicated to marriage, is essential for sperm-egg plasma membrane binding and fusion (Inoue et al., 2005 [PubMed 15759005]). [supplied by OMIM]
Synonyms:	IZUMO; OBF

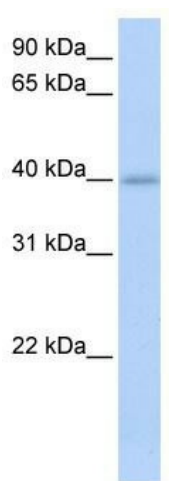


[View online »](#)

**Note:** Immunogen Sequence Homology: Human: 100%

**Protein Families:** Transmembrane

**Product images:**



WB Suggested Anti-IZUMO1 Antibody Titration:  
0.2-1 ug/ml; ELISA Titer: 1: 62500; Positive  
Control: Human heart