

## Product datasheet for **TA339198**

### Calcineurin A (PPP3CA) Rabbit Polyclonal Antibody

#### Product data:

Product Type:	Primary Antibodies
Applications:	WB
Recommended Dilution:	WB
Reactivity:	Human, Mouse
Host:	Rabbit
Isotype:	IgG
Clonality:	Polyclonal
Immunogen:	The immunogen for anti-PPP3CA antibody: synthetic peptide directed towards the middle region of human PPP3CA. Synthetic peptide located within the following region: LPSGVLSGGKQTLQSATVEAIEADEAIKGFSPQHKITSFEEAKGLDRINE
Formulation:	Liquid. Purified antibody supplied in 1x PBS buffer with 0.09% (w/v) sodium azide and 2% sucrose. <i>Note that this product is shipped as lyophilized powder to China customers.</i>
Concentration:	lot specific
Purification:	Protein A purified
Conjugation:	Unconjugated
Storage:	Store at -20°C as received.
Stability:	Stable for 12 months from date of receipt.
Predicted Protein Size:	59 kDa
Gene Name:	protein phosphatase 3 catalytic subunit alpha
Database Link:	<a href="#">NP_000935</a> <a href="#">Entrez Gene 19055 Mouse</a> <a href="#">Entrez Gene 5530 Human</a> <a href="#">Q08209</a>
Background:	PPP3CA belongs to the PPP phosphatase family, PP-2B subfamily. It is a calcium-dependent, calmodulin-stimulated protein phosphatase. This subunit may have a role in the calmodulin activation of calcineurin. PPP3CA dephosphorylates HSPB1 and SSH1.
Synonyms:	CALN; CALNA; CALNA1; CCN1; CNA1; PPP2B



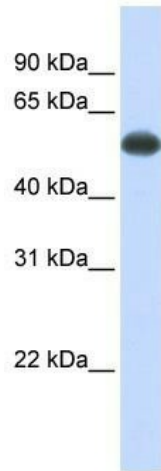
[View online »](#)

**Note:** Immunogen Sequence Homology: Dog: 100%; Pig: 100%; Rat: 100%; Horse: 100%; Human: 100%; Mouse: 100%; Bovine: 100%; Rabbit: 100%; Guinea pig: 100%; Zebrafish: 91%

**Protein Families:** Druggable Genome, Phosphatase

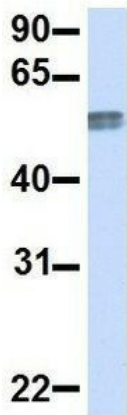
**Protein Pathways:** Alzheimer's disease, Amyotrophic lateral sclerosis (ALS), Apoptosis, Axon guidance, B cell receptor signaling pathway, Calcium signaling pathway, Long-term potentiation, MAPK signaling pathway, Natural killer cell mediated cytotoxicity, Oocyte meiosis, T cell receptor signaling pathway, VEGF signaling pathway, Wnt signaling pathway

**Product images:**



WB Suggested Anti-PPP3CA Antibody Titration: 0.2-1 ug/ml; ELISA Titer: 1: 312500; Positive Control: Human Muscle

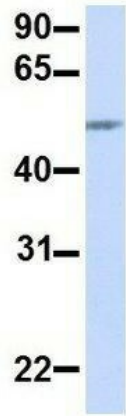
**PPP3CA**



Rabbit Anti-PPP3CA  
 Sample Type: Human Adult Placenta  
 Antibody Concentration: 1ug/mL

Host: Rabbit; Target Name: PPP3CA; Sample Tissue: Human Adult Placenta; Antibody Dilution: 1.0 ug/ml

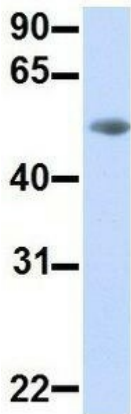
## PPP3CA



Rabbit Anti-PPP3CA  
Sample Type: Human Fetal Heart  
Antibody Concentration: 1ug/mL

Host: Rabbit; Target Name: PPP3CA; Sample Tissue: Human Fetal Heart; Antibody Dilution: 1.0 ug/ml

## PPP3CA



Rabbit Anti-PPP3CA  
Sample Type: Human Fetal Lung  
Antibody Concentration: 1ug/mL

Host: Rabbit; Target Name: PPP3CA; Sample Tissue: Human Fetal Lung; Antibody Dilution: 1.0 ug/ml