

Product datasheet for **TA339197**

Calcineurin A (PPP3CA) Rabbit Polyclonal Antibody

Product data:

Product Type:	Primary Antibodies
Applications:	WB
Recommended Dilution:	WB
Reactivity:	Mouse, Rat, Human
Host:	Rabbit
Isotype:	IgG
Clonality:	Polyclonal
Immunogen:	The immunogen for anti-PPP3CA antibody: synthetic peptide directed towards the N terminal of human PPP3CA. Synthetic peptide located within the following region: MSEPKAIDPKLSTTDRVVKAVPFPPSHRLTAKEVFDNDGKPRVDILKAHL
Formulation:	Liquid. Purified antibody supplied in 1x PBS buffer with 0.09% (w/v) sodium azide and 2% sucrose. <i>Note that this product is shipped as lyophilized powder to China customers.</i>
Concentration:	lot specific
Purification:	Protein A purified
Conjugation:	Unconjugated
Storage:	Store at -20°C as received.
Stability:	Stable for 12 months from date of receipt.
Predicted Protein Size:	59 kDa
Gene Name:	protein phosphatase 3 catalytic subunit alpha
Database Link:	NP_000935 Entrez Gene 19055 Mouse Entrez Gene 24674 Rat Entrez Gene 5530 Human Q08209
Background:	PPP3CA belongs to the PPP phosphatase family, PP-2B subfamily. It is a calcium-dependent, calmodulin-stimulated protein phosphatase. This subunit may have a role in the calmodulin activation of calcineurin. PPP3CA dephosphorylates HSPB1 and SSH1.
Synonyms:	CALN; CALNA; CALNA1; CCN1; CNA1; PPP2B



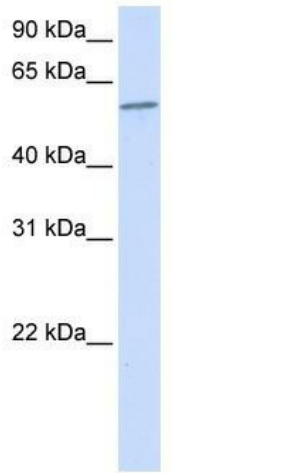
[View online »](#)

Note: Immunogen Sequence Homology: Dog: 100%; Pig: 100%; Rat: 100%; Horse: 100%; Human: 100%; Mouse: 100%; Bovine: 100%; Rabbit: 100%; Zebrafish: 79%

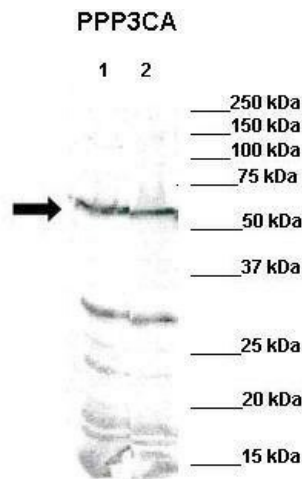
Protein Families: Druggable Genome, Phosphatase

Protein Pathways: Alzheimer's disease, Amyotrophic lateral sclerosis (ALS), Apoptosis, Axon guidance, B cell receptor signaling pathway, Calcium signaling pathway, Long-term potentiation, MAPK signaling pathway, Natural killer cell mediated cytotoxicity, Oocyte meiosis, T cell receptor signaling pathway, VEGF signaling pathway, Wnt signaling pathway

Product images:



WB Suggested Anti-PPP3CA Antibody Titration: 0.2-1 ug/ml; ELISA Titer: 1: 1562500; Positive Control: 293T cell lysate



WB Suggested Anti-PPP3CA Antibody; Positive Control: Lane 1: 80ug mouse brain extract Lane 2: 80ug rat brain extract; Primary Antibody Dilution: 1: 500; Secondary Antibody: IRDye 800 CW goat anti-rabbit from Li-COR Bioscience; Secondary Antibody Dilution: 1