

## Product datasheet for **TA339194**

### DCAF12 Rabbit Polyclonal Antibody

#### Product data:

Product Type:	Primary Antibodies
Applications:	WB
Recommended Dilution:	WB
Reactivity:	Human
Host:	Rabbit
Isotype:	IgG
Clonality:	Polyclonal
Immunogen:	The immunogen for anti-WDR40A antibody: synthetic peptide directed towards the middle region of human WDR40A. Synthetic peptide located within the following region: TKSDARHNVSRVPVYAHITHKALKDIPKEDTNPDNCKVRALAFNNKNKEL
Formulation:	Liquid. Purified antibody supplied in 1x PBS buffer with 0.09% (w/v) sodium azide and 2% sucrose. <i>Note that this product is shipped as lyophilized powder to China customers.</i>
Concentration:	lot specific
Purification:	Protein A purified
Conjugation:	Unconjugated
Storage:	Store at -20°C as received.
Stability:	Stable for 12 months from date of receipt.
Predicted Protein Size:	50 kDa
Gene Name:	DDB1 and CUL4 associated factor 12
Database Link:	<a href="#">NP_056212</a> <a href="#">Entrez Gene 25853 Human</a> <a href="#">Q5T6F0</a>



[View online »](#)

**Background:**

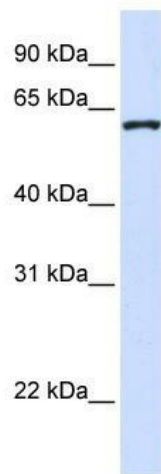
This gene was identified by isolating cDNA from a size-fractionated library derived from brain in an attempt to characterize genes encoding large proteins. The function of the protein encoded by this gene has not yet been determined. This gene was identified by isolating cDNA from a size-fractionated library derived from brain in an attempt to characterize genes encoding large proteins. The function of the protein encoded by this gene has not yet been determined.

**Synonyms:**

CT102; KIAA1892; TCC52; WDR40A

**Note:**

Immunogen Sequence Homology: Dog: 100%; Pig: 100%; Rat: 100%; Horse: 100%; Human: 100%; Mouse: 100%; Bovine: 100%; Rabbit: 100%; Guinea pig: 100%

**Product images:**

WB Suggested Anti-DCAF12 Antibody Titration:  
0.2-1 ug/ml; ELISA Titer: 1: 62500; Positive  
Control: 293T cell lysate