

Product datasheet for **TA339193**

Wasf2 Rabbit Polyclonal Antibody

Product data:

Product Type:	Primary Antibodies
Applications:	WB
Recommended Dilution:	WB
Reactivity:	Mouse
Host:	Rabbit
Isotype:	IgG
Clonality:	Polyclonal
Immunogen:	The immunogen for anti-Wasf2 antibody: synthetic peptide corresponding to a region of Mouse. Synthetic peptide located within the following region: ALKFYTNPSYFFDLWKEKMLQDTKDIMKEKRKHRKEKKNPNRGNVNP
Formulation:	Liquid. Purified antibody supplied in 1x PBS buffer with 0.09% (w/v) sodium azide and 2% sucrose. <i>Note that this product is shipped as lyophilized powder to China customers.</i>
Concentration:	lot specific
Purification:	Protein A purified
Conjugation:	Unconjugated
Storage:	Store at -20°C as received.
Stability:	Stable for 12 months from date of receipt.
Predicted Protein Size:	55 kDa
Gene Name:	WAS protein family, member 2
Database Link:	NP_700472 Entrez Gene 242687 Mouse Q8BH43
Background:	Wasf2 is a downstream effector molecule involved in the transmission of signals from tyrosine kinase receptors and small GTPases to the actin cytoskeleton. It promotes formation of actin filaments. Wasf2 is a part of the WAVE complex that regulates lamellipodia formation. The WAVE complex regulates actin filament reorganization via its interaction with the Arp2/3 complex.

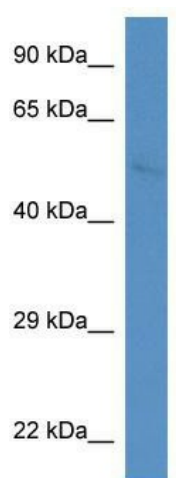


[View online »](#)

Synonyms: dj393P12.2; IMD2; OTTHUMP00000211879; SCAR2; WAVE2

Note: Immunogen Sequence Homology: Pig: 100%; Rat: 100%; Horse: 100%; Human: 100%; Mouse: 100%; Bovine: 100%; Rabbit: 100%; Guinea pig: 100%; Dog: 86%

Product images:



WB Suggested Anti-Wasf2 Antibody; Titration: 1.0 ug/ml; Positive Control: Mouse heart