

## Product datasheet for **TA339191**

### CCDC19 (CFAP45) Rabbit Polyclonal Antibody

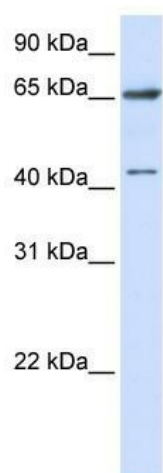
#### Product data:

Product Type:	Primary Antibodies
Applications:	WB
Recommended Dilution:	WB
Reactivity:	Human
Host:	Rabbit
Isotype:	IgG
Clonality:	Polyclonal
Immunogen:	The immunogen for anti-CCDC19 antibody: synthetic peptide directed towards the N terminal of human CCDC19. Synthetic peptide located within the following region: MPLSTAGILSSSSAASNRSRNKARYRTKAVSSEVDESFLGDIKSPAQGQS
Formulation:	Liquid. Purified antibody supplied in 1x PBS buffer with 0.09% (w/v) sodium azide and 2% sucrose. <i>Note that this product is shipped as lyophilized powder to China customers.</i>
Concentration:	lot specific
Purification:	Protein A purified
Conjugation:	Unconjugated
Storage:	Store at -20°C as received.
Stability:	Stable for 12 months from date of receipt.
Predicted Protein Size:	66 kDa
Gene Name:	cilia and flagella associated protein 45
Database Link:	<a href="#">NP_036469</a> <a href="#">Entrez Gene 25790 Human</a> <a href="#">Q9UL16</a>
Background:	The function remains unknown.
Synonyms:	CCDC19; NESG1
Note:	Immunogen Sequence Homology: Human: 100%; Dog: 85%; Pig: 85%; Rat: 85%; Horse: 85%; Bovine: 85%; Guinea pig: 85%; Yeast: 79%



[View online »](#)

## Product images:



WB Suggested Anti-CCDC19 Antibody Titration:  
0.2-1 ug/ml; ELISA Titer: 1: 62500; Positive  
Control: 293T cell lysate