

## Product datasheet for **TA339190**

### CD42b (GP1BA) Rabbit Polyclonal Antibody

#### Product data:

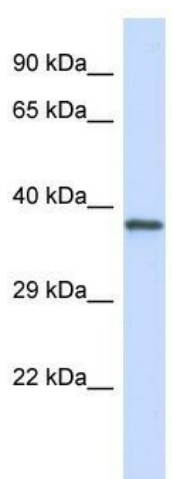
Product Type:	Primary Antibodies
Applications:	WB
Recommended Dilution:	WB
Reactivity:	Human
Host:	Rabbit
Isotype:	IgG
Clonality:	Polyclonal
Immunogen:	The immunogen for Anti-GP1BA antibody is: synthetic peptide directed towards the middle region of Human GP1BA. Synthetic peptide located within the following region: TPTPKLEKLSLANNNLTELPAGLLNGLENLDTLLLQENSLYTIPKGFSGS
Formulation:	Liquid. Purified antibody supplied in 1x PBS buffer with 0.09% (w/v) sodium azide and 2% sucrose. <i>Note that this product is shipped as lyophilized powder to China customers.</i>
Concentration:	lot specific
Purification:	Protein A purified
Conjugation:	Unconjugated
Storage:	Store at -20°C as received.
Stability:	Stable for 12 months from date of receipt.
Predicted Protein Size:	38 kDa
Gene Name:	glycoprotein Ib platelet alpha subunit
Database Link:	<a href="#">NP_000164</a> <a href="#">Entrez Gene 2811 Human P07359</a>
Background:	The function of this protein remains unknown.
Synonyms:	BDPLT1; BDPLT3; BSS; CD42B; CD42b-alpha; DBPLT3; GP1B; GPIbA; GPIbalpha; VWDP
Note:	Immunogen Sequence Homology: Human: 100%; Pig: 86%; Guinea pig: 86%; Rat: 79%
Protein Families:	Druggable Genome, Transmembrane



[View online »](#)

Protein Pathways: ECM-receptor interaction, Hematopoietic cell lineage

### Product images:



Host: Rabbit; Target Name: GP1BA; Sample Tissue: Jurkat Whole Cell lysates; Antibody Dilution: 1.0 ug/ml