

Product datasheet for **TA339186**

PEG10 Rabbit Polyclonal Antibody

Product data:

Product Type:	Primary Antibodies
Applications:	WB
Recommended Dilution:	WB
Reactivity:	Human
Host:	Rabbit
Isotype:	IgG
Clonality:	Polyclonal
Immunogen:	The immunogen for Anti-PEG10 antibody is: synthetic peptide directed towards the C-terminal region of Human PEG10. Synthetic peptide located within the following region: RKPRSPRALVLPHIASHHQVDPTPEVGGARMRLTQEEKERRRKLNLCLY
Formulation:	Liquid. Purified antibody supplied in 1x PBS buffer with 0.09% (w/v) sodium azide and 2% sucrose. <i>Note that this product is shipped as lyophilized powder to China customers.</i>
Concentration:	lot specific
Purification:	Protein A purified
Conjugation:	Unconjugated
Storage:	Store at -20°C as received.
Stability:	Stable for 12 months from date of receipt.
Predicted Protein Size:	44 kDa
Gene Name:	paternally expressed 10
Database Link:	NP_001165909 Entrez Gene 23089 Human Q86TG7



[View online »](#)

Background:

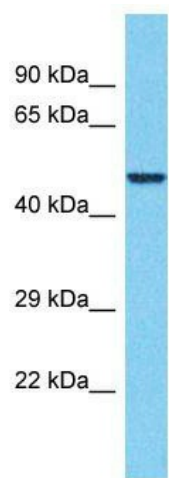
This is a paternally expressed imprinted gene that encodes transcripts containing two overlapping open reading frames (ORFs), RF1 and RF1/RF2, as well as retroviral-like slippage and pseudoknot elements, which can induce a -1 nucleotide frame-shift. ORF1 encodes a shorter isoform with a CCHC-type zinc finger motif containing a sequence characteristic of gag proteins of most retroviruses and some retrotransposons. The longer isoform is the result of -1 translational frame-shifting leading to translation of a gag/pol-like protein combining RF1 and RF2. It contains the active-site consensus sequence of the protease domain of pol proteins. Additional isoforms resulting from alternatively spliced transcript variants, as well as from use of upstream non-AUG (CUG) start codon, have been reported for this gene.

Synonyms:

EDR; HB-1; Mar2; Mart2; MEF3L; RGAG3

Note:

Immunogen Sequence Homology: Dog: 100%; Pig: 100%; Horse: 100%; Human: 100%; Bovine: 100%; Rabbit: 100%; Guinea pig: 93%; Mouse: 92%

Product images:

Host: Rabbit; Target Name: PEG10; Sample Tissue: Thyroid Tumor lysates; Antibody Dilution: 1.0 ug/ml