

Product datasheet for TA339185

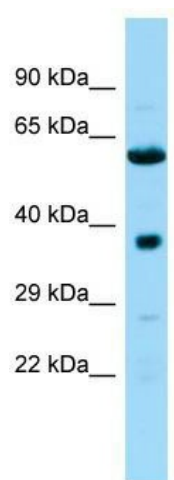
Ndufa10l1 Rabbit Polyclonal Antibody

Product data:

Product Type:	Primary Antibodies
Applications:	WB
Recommended Dilution:	WB
Reactivity:	Rat
Host:	Rabbit
Isotype:	IgG
Clonality:	Polyclonal
Immunogen:	The immunogen for Anti-Ndufa10l1 antibody is: synthetic peptide directed towards the C-terminal region of Rat Ndufa10l1. Synthetic peptide located within the following region: KREVLNYTTVPVYLPEITIGAHQGSRIYDSFRELPGRKYAPGYNADVGDK
Formulation:	Liquid. Purified antibody supplied in 1x PBS buffer with 0.09% (w/v) sodium azide and 2% sucrose.
Concentration:	lot specific
Purification:	Protein A purified
Conjugation:	Unconjugated
Storage:	Store at -20°C as received.
Stability:	Stable for 12 months from date of receipt.
Predicted Protein Size:	39 kDa
Gene Name:	NADH dehydrogenase (ubiquinone) 1 alpha subcomplex 10-like 1
Database Link:	NP_872612 Entrez Gene 316632 Rat Q561S0
Background:	The function of this protein remains unknown.
Synonyms:	Ndufa10
Note:	Immunogen Sequence Homology: Pig: 100%; Human: 100%; Mouse: 86%; Bovine: 83%; Rat: 79%; Horse: 79%; Guinea pig: 79%


[View online »](#)

Product images:



Host: Rabbit; Target Name: Ndufa10l1; Sample
Tissue: Rat Pancreas lysates; Antibody Dilution:
1.0 ug/ml