

Product datasheet for **TA339184**

MGP Rabbit Polyclonal Antibody

Product data:

Product Type:	Primary Antibodies
Applications:	IHC, WB
Recommended Dilution:	WB, IHC
Reactivity:	Human
Host:	Rabbit
Isotype:	IgG
Clonality:	Polyclonal
Immunogen:	The immunogen for anti-MGP antibody: synthetic peptide directed towards the middle region of human MGP. Synthetic peptide located within the following region: INRRNANTFISPQQRWRAKVQERIRERSKPVHELNREACDDYRLCERYAM
Formulation:	Liquid. Purified antibody supplied in 1x PBS buffer with 0.09% (w/v) sodium azide and 2% sucrose. <i>Note that this product is shipped as lyophilized powder to China customers.</i>
Concentration:	lot specific
Purification:	Protein A purified
Conjugation:	Unconjugated
Storage:	Store at -20°C as received.
Stability:	Stable for 12 months from date of receipt.
Predicted Protein Size:	12 kDa
Gene Name:	matrix Gla protein
Database Link:	NP_000891 Entrez Gene 4256 Human P08493
Background:	MGP is associated with the organic matrix of bone and cartilage. MGP is thought to act as an inhibitor of bone formation.
Synonyms:	GIG36; MGLAP; NTI

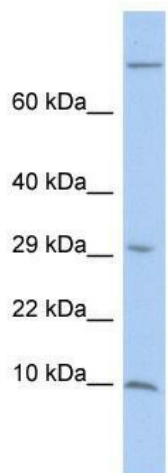


[View online »](#)

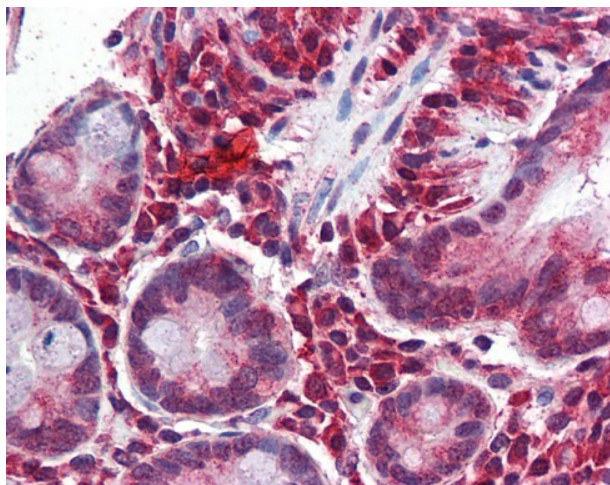
Note: Immunogen Sequence Homology: Human: 100%; Pig: 86%; Guinea pig: 86%; Rat: 85%; Bovine: 79%

Protein Families: Secreted Protein

Product images:



WB Suggested Anti-MGP Antibody Titration: 0.2-1 ug/ml; ELISA Titer: 1: 312500; Positive Control: Jurkat cell lysate



Small intestine