

## Product datasheet for **TA339182**

### GPSM2 Rabbit Polyclonal Antibody

#### Product data:

Product Type:	Primary Antibodies
Applications:	IF, IHC, WB
Recommended Dilution:	IHC, WB, IF
Reactivity:	Human
Host:	Rabbit
Isotype:	IgG
Clonality:	Polyclonal
Immunogen:	The immunogen for anti-GPSM2 antibody: synthetic peptide directed towards the N terminal of human GPSM2. Synthetic peptide located within the following region: YFYLHDYAKALEYHHHDLTLARTIGDQLGEAKASGNLGNLTKVLGNFDEA
Formulation:	Liquid. Purified antibody supplied in 1x PBS buffer with 0.09% (w/v) sodium azide and 2% sucrose.
Concentration:	lot specific
Purification:	Protein A purified
Conjugation:	Unconjugated
Storage:	Store at -20°C as received.
Stability:	Stable for 12 months from date of receipt.
Predicted Protein Size:	76 kDa
Gene Name:	G-protein signaling modulator 2
Database Link:	<a href="#">NP_037428</a> <a href="#">Entrez Gene 29899 Human</a> <a href="#">P81274</a>
Background:	Heterotrimeric G proteins transduce extracellular signals received by cell surface receptors into integrated cellular responses. GPSM2 belongs to a group of proteins that modulate activation of G proteins. Heterotrimeric G proteins transduce extracellular signals received by cell surface receptors into integrated cellular responses. GPSM2 belongs to a group of proteins that modulate activation of G proteins (Blumer et al., 2002 [PubMed 11832491]). [supplied by OMIM]



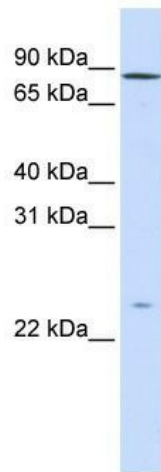
[View online »](#)

**Synonyms:** CMCS; DFNB82; LGN; PINS

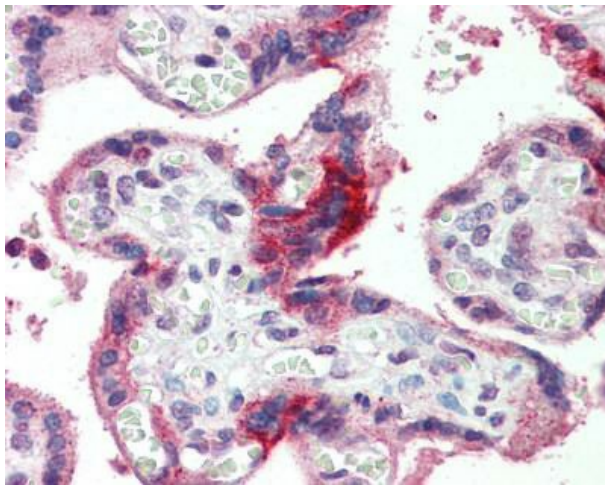
**Note:** Immunogen Sequence Homology: Dog: 100%; Rat: 100%; Horse: 100%; Human: 100%; Mouse: 100%; Bovine: 100%; Rabbit: 100%; Zebrafish: 100%; Pig: 93%; Guinea pig: 86%

**Protein Families:** Druggable Genome

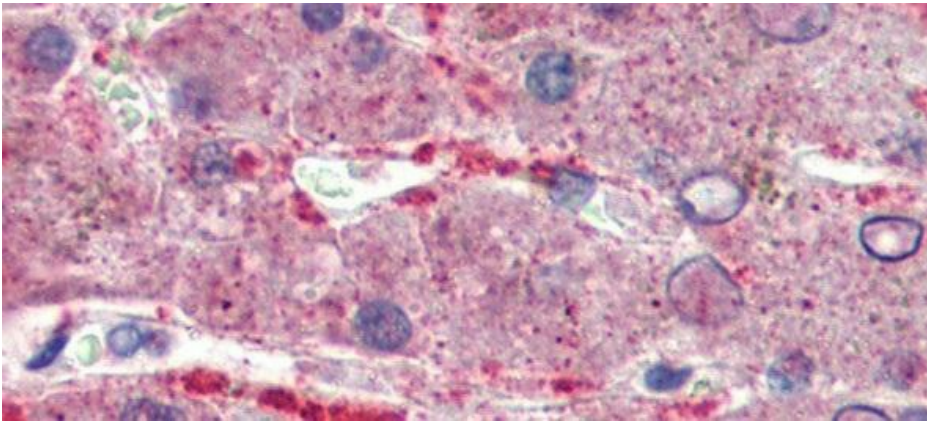
**Product images:**



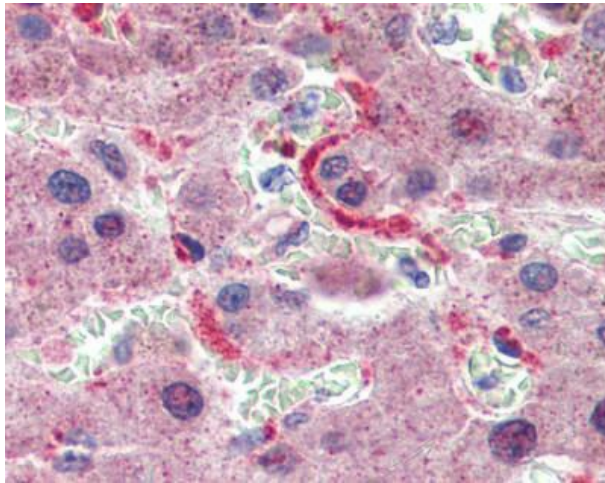
GPSM2 antibody - N-terminal region validated by WB using Fetal Liver Lysate at 1 ug/ml.



IAnti-GPSM2 antibody IHC staining of human placenta. Immunohistochemistry of formalin-fixed, paraffin-embedded tissue after heat-induced antigen retrieval. Antibody concentration 5 ug/ml.

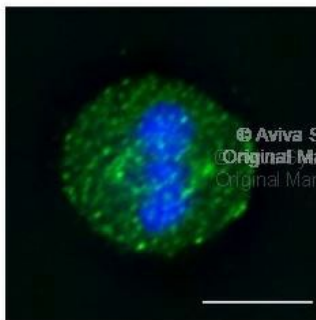


Rabbit Anti-GPSM2 Antibody; Paraffin Embedded Tissue: Human Liver; Antibody Concentration: 5 ug/ml



Anti-GPSM2 antibody IHC staining of human liver. Immunohistochemistry of formalin-fixed, paraffin-embedded tissue after heat-induced antigen retrieval. Antibody concentration 5 ug/ml.

DNA anti-LGN/GPSM2



MeOH Fixation

Application data in forum



Formaldehyde Fixation

GPSM2 antibody - N-terminal region in human cell lines with GFP-LGN fusion using Immunofluorescence.