

Product datasheet for **TA339180**

C16orf48 (ENKD1) Rabbit Polyclonal Antibody

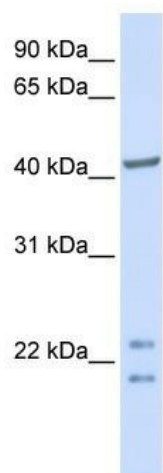
Product data:

| | |
|-------------------------|---|
| Product Type: | Primary Antibodies |
| Applications: | WB |
| Recommended Dilution: | WB |
| Reactivity: | Human |
| Host: | Rabbit |
| Isotype: | IgG |
| Clonality: | Polyclonal |
| Immunogen: | The immunogen for anti-C16orf48 antibody: synthetic peptide directed towards the C terminal of human C16orf48. Synthetic peptide located within the following region: DLWRREAEARKSQPDPPGHTRMPEHQRLTLTKLLQSQSLLREL |
| Formulation: | Liquid. Purified antibody supplied in 1x PBS buffer with 0.09% (w/v) sodium azide and 2% sucrose. <i>Note that this product is shipped as lyophilized powder to China customers.</i> |
| Concentration: | lot specific |
| Purification: | Protein A purified |
| Conjugation: | Unconjugated |
| Storage: | Store at -20°C as received. |
| Stability: | Stable for 12 months from date of receipt. |
| Predicted Protein Size: | 39 kDa |
| Gene Name: | enkurin domain containing 1 |
| Database Link: | NP_115516 Entrez Gene 84080 Human Q9H0I2 |
| Background: | The exact function of ENKD1 remains unknown. |
| Synonyms: | C16orf48; DAKV6410 |
| Note: | Immunogen Sequence Homology: Human: 100%; Pig: 92%; Rat: 92%; Guinea pig: 92%; Dog: 86%; Bovine: 86%; Horse: 85%; Mouse: 83%; Rabbit: 77% |



[View online »](#)

Product images:



WB Suggested Anti-ENKD1 Antibody Titration:
0.2-1 ug/ml; ELISA Titer: 1: 2500; Positive Control:
Human brain