

## Product datasheet for **TA339179**

### **C16orf48 (ENKD1) Rabbit Polyclonal Antibody**

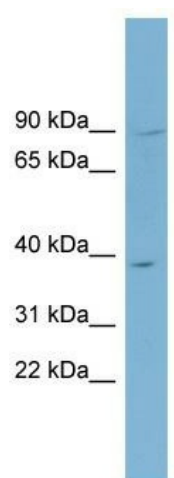
#### **Product data:**

Product Type:	Primary Antibodies
Applications:	WB
Recommended Dilution:	WB
Reactivity:	Human
Host:	Rabbit
Isotype:	IgG
Clonality:	Polyclonal
Immunogen:	The immunogen for anti-C16orf48 antibody: synthetic peptide directed towards the middle region of human C16orf48. Synthetic peptide located within the following region: SQLLRELVLPPAGADSLRAQSHRAELDRKLVQVEEAIKIFSRPKVFKMD
Formulation:	Liquid. Purified antibody supplied in 1x PBS buffer with 0.09% (w/v) sodium azide and 2% sucrose. <i>Note that this product is shipped as lyophilized powder to China customers.</i>
Concentration:	lot specific
Purification:	Protein A purified
Conjugation:	Unconjugated
Storage:	Store at -20°C as received.
Stability:	Stable for 12 months from date of receipt.
Predicted Protein Size:	39 kDa
Gene Name:	enkurin domain containing 1
Database Link:	<a href="#">NP_115516</a> <a href="#">Entrez Gene 84080 Human</a> <a href="#">Q9H0I2</a>
Background:	The exact function of ENKD1 remains unknown.
Synonyms:	C16orf48; DAKV6410
Note:	Immunogen Sequence Homology: Dog: 100%; Pig: 100%; Rat: 100%; Horse: 100%; Human: 100%; Mouse: 100%; Bovine: 100%; Guinea pig: 100%; Rabbit: 93%; Zebrafish: 86%



[View online »](#)

## Product images:



WB Suggested Anti-ENKD1 Antibody Titration:  
0.2-1 ug/ml; ELISA Titer: 1: 312500; Positive  
Control: PANC1 cell lysate